

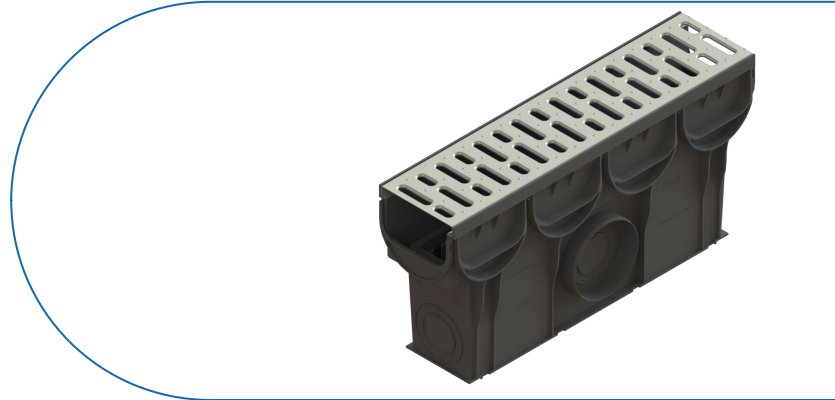
# Drain: Kit Camin PP EASY 2/3 Inspectie cu gratar OZ A15 509x133x250 (0888011)

## 0888011

**509 mm**  
LENGTH

**250 mm**  
HEIGHT

**133 mm**  
WIDTH



### USAGE:

The EASY range of manhole kits are used for pedestrian surfaces, in areas intended for pedestrians and cyclists.

### QUALITY CONDITIONS:

- EU Regulation No. 305/2011
- SR EN 13598-1

### ADVANTAGES:

- Easy to handle and install
- UV-resistant
- Various installation widths and heights
- Can be used with A15 class gratings
- Long service life

### LIFESPAN:

- 20 years - with proper installation, storage, and operational guidelines.

## INSTALLATION

The EASY range catch basins allow direct connection of gutters or pipes. Connections are made quickly and easily. Detachment is also very easy and does not require special equipment

**!** For efficient installation, we recommend using G12M29-C sealant. It is used for sealing gutters, pipes, and drainage systems:



- Curing time: 24 hours/2-3 mm
- Temperature resistance: -40° C to +70° C
- Processing temperature: +5° C to +40° C

BASE sealing paste (sealant) for PP-FB-PB gutters, tube, 310 ml (G12M29-C)



## Accessories 0888011



**CHARACTERISTICS**

<b>Product name</b>	Kit Camin PP EASY 2/3 Inspectie cu gratar OZ A15 509x133x250 (0888011)
<b>Product code</b>	0888011
<b>EAN code</b>	6427669003250
<b>Product category</b>	Camine pluviale Easy
<b>Brand</b>	Drain
<b>Weight</b>	1.88 kg
<b>Stock availability</b>	On order
<b>Length, mm</b>	509
<b>Width, mm</b>	133
<b>Height (H), mm</b>	250
<b>Pipe connection (DN)</b>	DN50, DN75, DN110,
<b>Channel connection(LN)</b>	LN100
<b>Load class</b>	A15
<b>Product Material</b>	Polypropylene
<b>Grate Material</b>	Galvanized Steel
<b>Colour</b>	Black
<b>Producer code</b>	0888011
<b>Grate fastening system</b>	Click
<b>Warranty, months</b>	24
<b>Lifespan, years</b>	20
<b>Producer</b>	VODALAND INDUSTRY LLC