

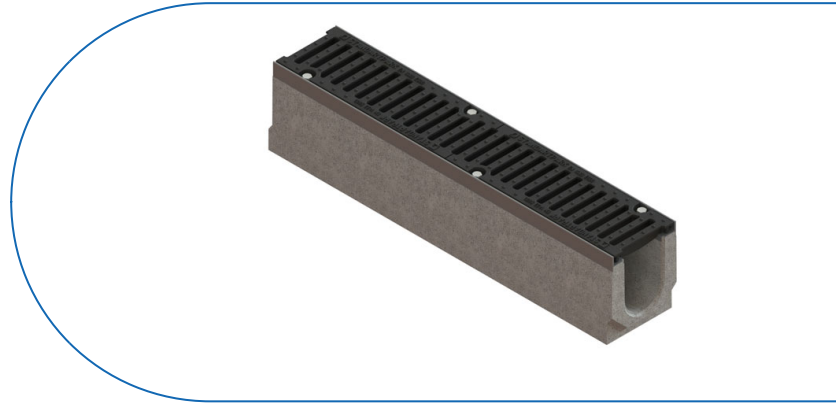
# Drain: Kit rigola FB MEGA LN110 Hext.210 muchii OZ gratar FONTA E600 1000x187x210 (04100/04-04)

## 04100/04-04

**1000 mm**  
HOSSZ

**210 mm**  
MAGASSÁG

**187 mm**  
SZÉLESSÉG



### FELHASZNÁLÁS:

MAX gutters in class E600 are used both on the carriageway of roads, shoulders and parking areas, as well as on surfaces subject to heavy loads, such as industrial areas, ports or docks.

### MINŐSÉGI FELTÉTELEK:

- According to SR EN 1433:2002
- According to EU Regulation No. 305/2011
- Declaration of Performance

### ELŐNYÖK:


- Easy to handle and install
- UV-resistant
- Various installation widths and heights
- Use in public areas
- Long service life

### ÉLETTARTAM:

- 50 years - subject to compliance with assembly, storage and operation instructions

## SZERELÉS

The MAX channel drainage system can be installed without the use of a collector manhole. In this case, the system is closed with end plates on both sides and on the bottom or side of the channel.

 For efficient installation, we recommend using G12M29C sealant. It is used for sealing gutters, pipes and drainage systems.

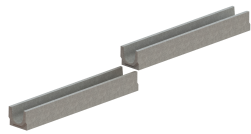


- Curing time: 24h/2-3 mm
- Application temperature: +5° C to +40°C
- Maximum storage temperature: 32°C

BASE sealant, construction products, 310 ml tube (G12M29-C).



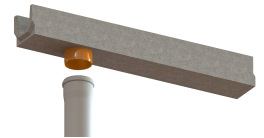
**Conexiune camin colector**



**Conexiune tronson**



**Conexiune tronson**



**Disponibil si cu conexiune  
verticala**

**JELLEMZŐK**

<b>Termék neve</b>	Kit rigola FB MEGA LN110 Hext.210 muchii OZ gratar FONTA E600 1000x187x210 (04100/04-04)
<b>Termékkód</b>	04100/04-04
<b>EAN kód</b>	6427669023968
<b>Termékkategória</b>	Rigole beton MEGA (E600-F900)
<b>Brand</b>	Drain
<b>Súly</b>	64.00 kg
<b>Készlet elérhetősége</b>	Egyedi gyártású
<b>Hossz, mm</b>	1000
<b>Szélesség, mm</b>	187
<b>Névleges szélesség, mm</b>	LN110
<b>Külső magasság, mm (Hext)</b>	210
<b>Belső magasság, mm (Hint)</b>	180
<b>Terhességi osztály</b>	E600
<b>Ereszcsatorna anyaga</b>	Szálas beton
<b>Grill Anyaga</b>	Öntöttvas
<b>Garancia, hónap</b>	24
<b>Élettartam, évek</b>	50
<b>Termelő</b>	BETONIKA