

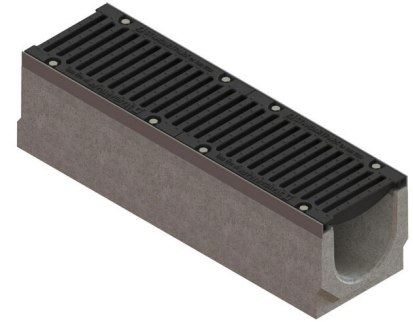
Drain: Kit rigola FB MEGA LN200 Hext.215 muchii OZ gratar FONTA E600 1000x290x215 (04500/215)

04500/215

1000 mm
HOSSZ

215 mm
MAGASSÁG

290 mm
SZÉLESSÉG



FELHASZNÁLÁS:

MAX gutters in class E600 are used both on the carriageway of roads, shoulders and parking areas, as well as on surfaces subject to heavy loads, such as industrial areas, ports or docks.

MINŐSÉGI FELTÉTELEK:

- According to SR EN 1433:2002
- According to EU Regulation No. 305/2011
- Declaration of Performance

ELŐNYÖK:


- Easy to handle and install
- UV-resistant
- Various installation widths and heights
- Use in public areas
- Long service life

ÉLETTARTAM:

- 50 years - subject to compliance with assembly, storage and operation instructions

SZERELÉS

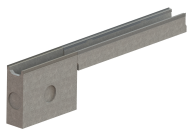
The MAX channel drainage system can be installed without the use of a collector manhole. In this case, the system is closed with end plates on both sides and on the bottom or side of the channel.

 For efficient installation, we recommend using G12M29C sealant. It is used for sealing gutters, pipes and drainage systems.



- Curing time: 24h/2-3 mm
- Application temperature: +5° C to +40°C
- Maximum storage temperature: 32°C

BASE sealant, construction products, 310 ml tube (G12M29-C).



Conexiune camin colector



Conexiune tronson



Conexiune tronson



**Disponibil si cu conexiune
verticala**

JELLEMZŐK

Termék neve	Kit rigola FB MEGA LN200 Hext.215 muchii OZ gratar FONTA E600 1000x290x215 (04500/215)
Termékkód	04500/215
EAN kód	6427669024231
Termékkategória	Rigole beton MEGA (E600-F900)
Brand	Drain
Súly	101.80 kg
Készlet elérhetősége	Egyedi gyártású
Hossz, mm	1000
Szélesség, mm	290
Névleges szélesség, mm	LN200
Külső magasság, mm (Hext)	215
Belső magasság, mm (Hint)	196
Terhességi osztály	E600
Ereszcsatorna anyaga	Szálas beton
Grill Anyaga	Öntöttvas
Garancia, hónap	24
Élettartam, évek	50
Termelő	BETONIKA