

# **Drain: Kit rigola FB MEGA LN300 Hext.410 muchii OZ gratar FONTA E600 1000x390x410 (04700/410)**

## 04700/410

**1000 mm**  
LENGTH

**410 mm**  
HEIGHT

**390 mm**  
WIDTH



### USAGE:

MAX gutters in class E600 are used both on the carriageway of roads, shoulders and parking areas, as well as on surfaces subject to heavy loads, such as industrial areas, ports or docks.

### QUALITY CONDITIONS:

- According to SR EN 1433:2002
- According to EU Regulation No. 305/2011
- Declaration of Performance

### ADVANTAGES:


- Easy to handle and install
- UV-resistant
- Various installation widths and heights
- Use in public areas
- Long service life

### LIFESPAN:

- 50 years - subject to compliance with assembly, storage and operation instructions

## INSTALLATION

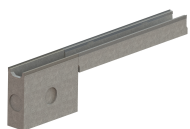
The MAX channel drainage system can be installed without the use of a collector manhole. In this case, the system is closed with end plates on both sides and on the bottom or side of the channel.

 For efficient installation, we recommend using the G12M29C sealant. It's used for sealing channels, pipes, and drainage systems.



- Curing time: 24h/2-3 mm
- Operating temperature: +5°C to +40°C
- Maximum storage temperature: 32°C

BASE sealant, construction products, 310 ml tube (G12M29-C).



**Conexiune camin colector**



**Conexiune tronson**



**Conexiune tronson**



**Disponibil si cu conexiune  
verticala**

## CHARACTERISTICS

## Product name

Product code	04700/410
--------------	-----------

EAN code	6427669005575
----------	---------------

Product category	Rigole beton MEGA (E600-F900)
------------------	-------------------------------

Brand	Drain
-------	-------

Weight	0.00 kg
--------	---------

Stock availability	On order
--------------------	----------

Length, mm	1000
------------	------

Width, mm	390
-----------	-----

Nominal Length, mm	LN300
--------------------	-------

Exterior Height, mm (Hext)	410
----------------------------	-----

Interior Height, mm (Hint)	340
----------------------------	-----

Load class	E600
------------	------

Channel material	Concrete
------------------	----------

Grate Material	Cast Iron
----------------	-----------

Warranty, months	24
------------------	----

Lifespan, years	50
-----------------	----

Producer	BETONIKA
----------	----------