

Drain: Baza camin PVC PIPE BASE D.400 1in/1out D.160 (BC34130)

BC34130

160 160.00
BELSÓ/KÜLSŐ ÁTMÉRŐ

400 mm
ÁTMÉRŐ



FELHASZNÁLÁS:

Manholes are used for underground installation in sewage networks, for the purpose of cleaning and inspection. They are usually located at points that are prone to possible blockages of the network due to the accumulation of substances in wastewater.

MINŐSÉGI FELTÉTELEK:

- Declaration of performance

ELŐNYÖK:

- Easy to handle and install
- Various widths and heights
- Use in residential areas or private homes
- Long service life

ÉLETTARTAM:

- 20 years - subject to compliance with assembly, storage and operation instructions.

SZERELÉS

Manholes are located at changes in diameter in the network, at the intersection of two or more pipes and along the route of the sewer network.

! For efficient installation, we recommend using G12M29C sealant. It is used for sealing gutters, pipes and drainage systems.

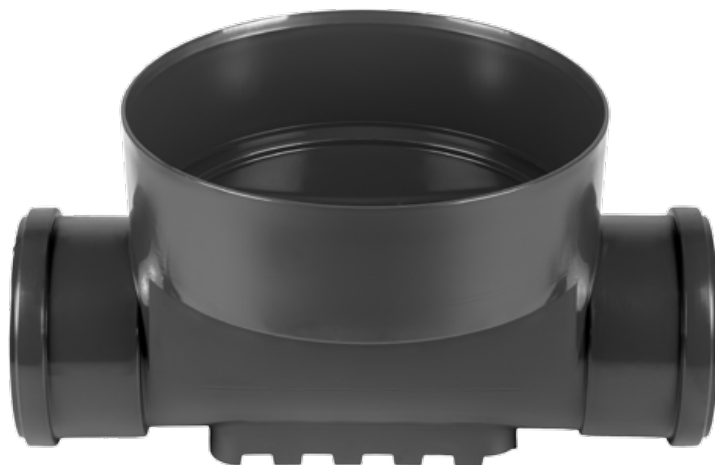


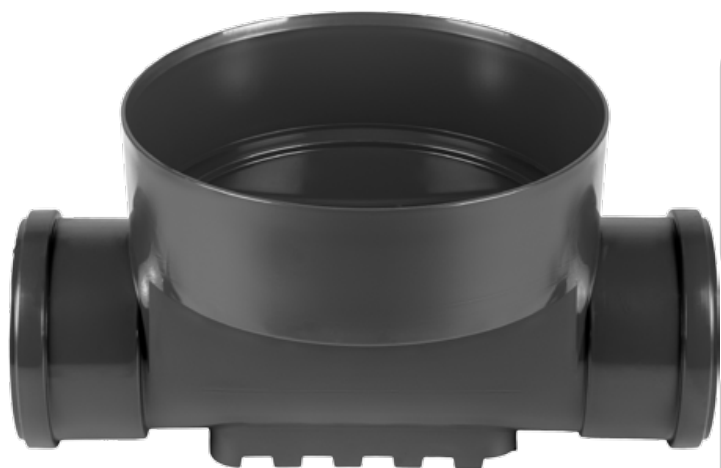
- Curing time: 24h/2-3 mm
- Application temperature: +5° C to +40°C
- Maximum storage temperature: 32°C

BASE sealant, construction products, 310 ml tube (G12M29-C).



Tartozékok BC34130





Lubrifiant PIPE BASE pt mufe
250gr (LM13110)



Lubrifiant PIPE BASE pt mufe
500gr (LM13120)



JELLEMZŐK

Termék neve	Baza camin PVC PIPE BASE D.400 1in/1out D.160 (BC34130)
Termékkód	BC34130
EAN kód	6426282034917
Termékkategória	Camine vizitare
Brand	Drain
Súly	4.20 kg
Készlet elérhetősége	Tárolható
Hossz, mm	590
Szélesség, mm	400
Magasság (M), mm	432
Csócsatlakozás (DN)	160
Termék anyaga	Polipropilén
Garancia, hónap	24
Élettartam, évek	50
Termelő	