

# Drain: Baza camin PVC PIPE BASE D.400 1in/1out D.110 (BC34100)

## BC34100

**110 110.00**  
BELSÓ/KÜLSŐ ÁTMÉRŐ

**400 mm**  
ÁTMÉRŐ



### FELHASZNÁLÁS:

Manholes are used for underground installation in sewage networks, for the purpose of cleaning and inspection. They are usually located at points that are prone to possible blockages of the network due to the accumulation of substances in wastewater.

### MINŐSÉGI FELTÉTELEK:

- Declaration of performance

### ELŐNYÖK:

- Easy to handle and install
- Various widths and heights
- Use in residential areas or private homes
- Long service life

### ÉLETTARTAM:

- 20 years - subject to compliance with assembly, storage and operation instructions.

## SZERELÉS

Manholes are located at changes in diameter in the network, at the intersection of two or more pipes and along the route of the sewer network.

**!** For efficient installation, we recommend using G12M29C sealant. It is used for sealing gutters, pipes and drainage systems.

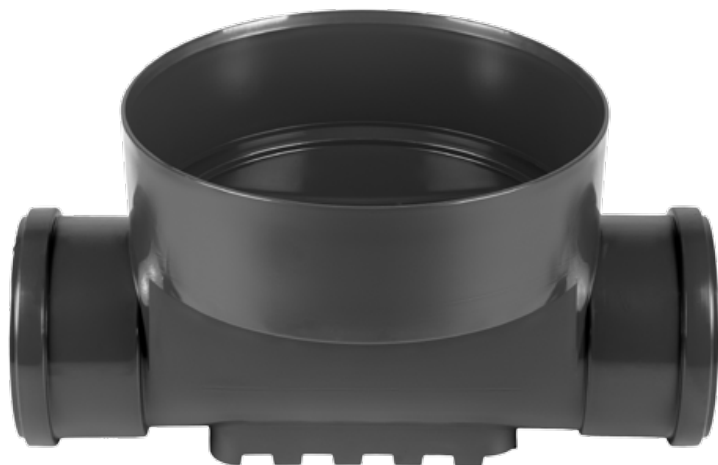


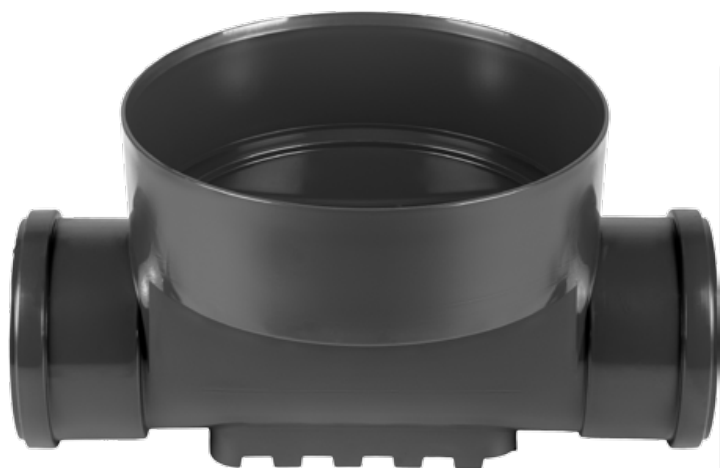
- Curing time: 24h/2-3 mm
- Application temperature: +5° C to +40°C
- Maximum storage temperature: 32°C

BASE sealant, construction products, 310 ml tube (G12M29-C).



## Tartozékok BC34100





Lubrifiant PIPE BASE pt mufe  
250gr (LM13110)



Lubrifiant PIPE BASE pt mufe  
500gr (LM13120)



**JELLEMZŐK**

<b>Termék neve</b>	Baza camin PVC PIPE BASE D.400 1in/1out D.110 (BC34100)
<b>Termékkód</b>	BC34100
<b>EAN kód</b>	6427669000211
<b>Termékkategória</b>	Camine vizitare
<b>Brand</b>	Drain
<b>Súly</b>	2.71 kg
<b>Készlet elérhetősége</b>	Egyedi gyártású
<b>Hossz, mm</b>	456
<b>Szélesség, mm</b>	400
<b>Magasság (M), mm</b>	351
<b>Csócsatlakozás (DN)</b>	110
<b>Termék anyaga</b>	Polipropilén
<b>Garancia, hónap</b>	24
<b>Élettartam, évek</b>	50
<b>Termelő</b>	MAGNAPLAST SP.Z.O.O