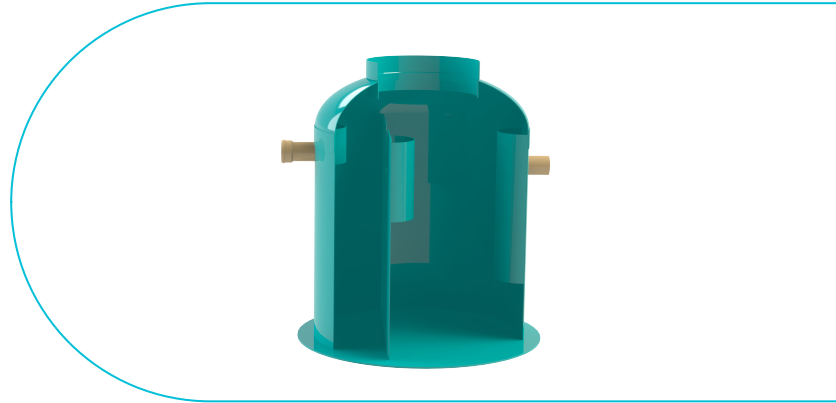


# Clean: Separator GRASIMI GRP GBase 15.0LS D2400 H2100 TN1500L IN/OUT Ø200 (SGGLE15LS)

## SGGLE15LS

**2400 mm**  
ÁTMÉRŐ

**2100 mm**  
MAGASSÁG/HOSSZ



### FELHASZNÁLÁS:

GRP GREASE separators can be used in several areas of use:

- pre-treatment of water infected with vegetable or animal fats
- water from kitchens; factories; food industry production units;
- prevents clogging of sewage networks with fat deposits.

### MINŐSÉGI FELTÉTELEK:

- Declaration of Performance
- In accordance with EU Regulation 305/2011
- ISO 9001

### ELŐNYÖK:

- Different volumes for customized applications;
- Easy and fast installation and assembly;
- Optimized dimensions for transport;
- Allow the separator to be disassembled into segments, thus allowing easier handling during transport or on site.

### TERMÉKGARANCIA:

- Warranty 2 years
- Lifespan 50 years

## SZERELÉS

The assembly and commissioning are carried out according to the instructions provided by the manufacturer. This product is installed in pedestrian and road areas.

All optional accessories of the product will be sealed with mastic.

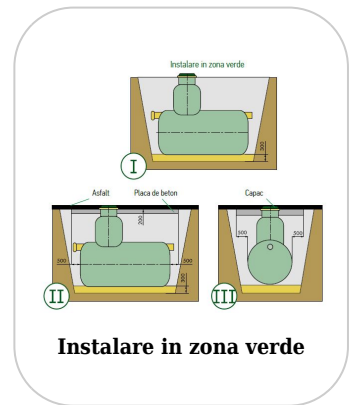
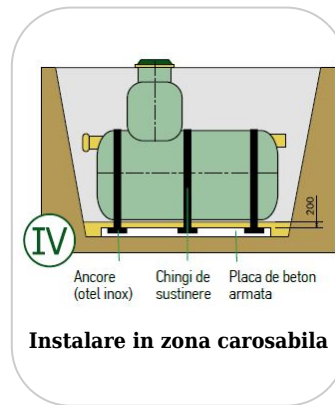
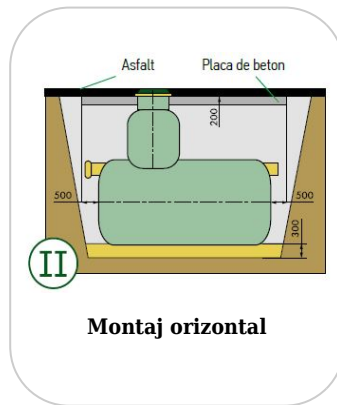
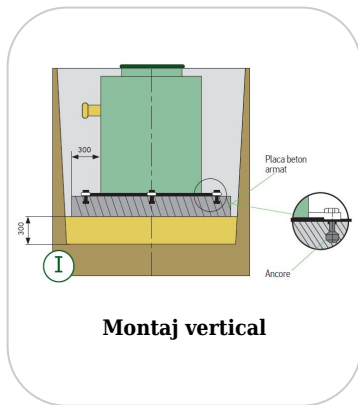
**!** For efficient installation, we recommend using G12M29-C sealant.

It is used for sealing gutters, pipes and drainage systems;

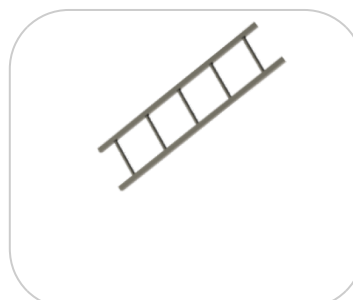
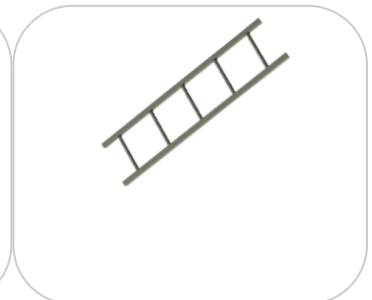
- Curing time: 24h/2-3 mm
- Temperature resistance: -40° C to +70° C
- Processing temperature: +5° C to +40° C



- BASE sealant, construction products, tube, 310 ml (G12M29-C)



## Tartozékok SGGLE15LS



No. crt.	Model / Coding	Nominal flow rate (l/s)	Diameter (mm)	Separator height (mm)	Inlet/outlet connection diameters	Calculated useful volume (liters)	Grease Volume (liters)	Sludge trap volume (liters)
1	SGGLE1LS	1	800	1230	110	503	130	105
2	SGGLE2LS	2	1000	1490	110	946	200	210
3	SGGLE3LS	3	1200	1500	110	1052	290	305
4	SGGLE4LS	4	1400	1600	110	1847	390	415
5	SGGLE5LS	5	1600	1750	110	2614	580	540
6	SGGLE7LS	7	1800	1850	160	3563	740	760
7	SGGLE10LS	10	2400	1810	160	4207	1100	1089
8	SGGLE15LS	15	2400	2100	200	5112	1690	1586

## JELLEMZŐK

<b>Termék neve</b>	Separator GRASIMI GRP GBase 15.0LS D2400 H2100 TN1500L IN/OUT Ø200 (SGGLE15LS)
<b>Termékkód</b>	SGGLE15LS
<b>EAN kód</b>	6427669001263
<b>Termékkategória</b>	Separatoare Grasimi GRP
<b>Brand</b>	Clean
<b>Súly</b>	1100.00 kg
<b>Készlet elérhetősége</b>	Egyedi gyártású
<b>Magasság (M), mm</b>	2100
<b>Belső átmérő / hézag (mm)</b>	620
<b>Bemeneti csatlakozó átmérője (DNin) mm</b>	200
<b>Kimeneti csatlakozó átmérője (DNout) mm</b>	200
<b>Termék anyaga</b>	Üvegszállal erősített poliészter (PAFS/GRP)
<b>Névleges áramlási sebesség (Q, l/s)</b>	15
<b>Teljes térfogat (Vt, liter)</b>	9500
<b>Hasznos térfogat (Vu, liter)</b>	5112
<b>Zsírmennyiség (Vg, liter)</b>	1690
<b>Iszapfogó, (liter)</b>	1586
<b>Rögzítőrendszer</b>	
<b>Garancia, hónap</b>	24
<b>Termelő</b>	FIBERICA