

# **Drain: Kit rigola PP PRO LN100 Hext.216 muchii OZ gratar FONTA D400 1000x160X216 (080434)**

**080434**

**1000 mm**  
LENGTH

**216 mm**  
HEIGHT

**160 mm**  
WIDTH



## **USAGE:**

PRO series gutters are designed to drain surface rainwater from public traffic areas. They can be placed on shoulders, parking lots and parking spaces for all types of road vehicles.

## **QUALITY CONDITIONS:**

- According to SR EN 1433:2002
- According to EU Regulation No. 305/2011

## **ADVANTAGES:**

- Easy to handle and install
- UV-resistant
- Various installation widths and heights
- Use in industrial areas
- Long service life

## **LIFESPAN:**

- Installing gutters according to the instructions provided by the manufacturer can provide a lifespan of approximately 50 years.

## INSTALLATION

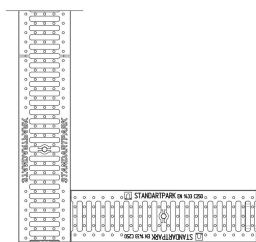
DRIVE Polypropylene gutter kits are characterized by optimized design and fixed mounting of the grating with bolts and nuts. Nozzles and metal reinforcement anchors are installed at the edge of the gutter.

**!** For efficient installation, we recommend using G12M29C sealant. It is used for sealing gutters, pipes and drainage systems.



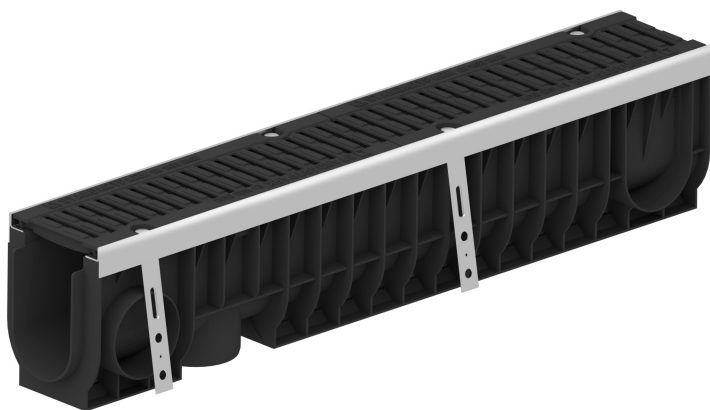
- Curing time: 24h/2-3 mm
- Application temperature: +5° C to +40°C
- Maximum storage temperature: 32°C

BASE sealant, construction products, 310 ml tube (G12M29-C).



**Conexiune 90 grade**

## Accessories 080434



Placa capat PP BASE cu stut pt  
rigola LN100 Hext.200  
(6301408-M)



Placa capat PP BASE pt rigola  
LN100 Hext.200 (63014-M)

## CHARACTERISTICS

### Product name

Product code	080434
EAN code	6426282039608
Product category	Rigole plastic PRO (D400)
Brand	Drain
Weight	13.85 kg
Stock availability	On order
Length, mm	1000
Width, mm	160
Nominal Length, mm	LN100
Exterior Height, mm (Hext)	216
Interior Height, mm (Hint)	166
Load class	D400
Channel material	Polypropylene
Grate Material	Cast Iron
Warranty, months	24
Lifespan, years	50
Producer	