

Drain: Kit rigola PP EASY 1 LN70 Hext.90 gratar PP Negru A15 1000x90x90 (088081-M)

088081-M

1000 mm
LENGTH

90 mm
HEIGHT

90 mm
WIDTH



USAGE:

Pedestrian zones and cycling routes with low traffic intensity. They are ideal for private and residential developments.

QUALITY CONDITIONS:

- Compliant with SR EN 1433:2003
- Compliant with EU Regulation No. 305/2011
- Declaration of performance

ADVANTAGES:


- Easy to handle and install
- UV-resistant
- Various widths and mounting heights
- Use in residential areas or private homes
- Long lifespan

LIFESPAN:

- 20 years - with proper installation, storage, and usage according to instructions.

INSTALLATION

The drainage system with channels can be installed without a collector chamber because both ends of the channel can be tightly sealed with end caps, and the discharge point towards the sewer network will be made through the vertical connection of the channel.

 For efficient installation, we recommend using the G12M29C sealant. It's used for sealing channels, pipes, and drainage systems.

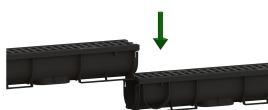


- Curing time: 24h/2-3 mm
- Operating temperature: +5°C to +40°C
- Maximum storage temperature: 32°C

BASE sealant, construction products, 310 ml tube (G12M29-C).



Conexiune 90 grade



Conexiune tronson

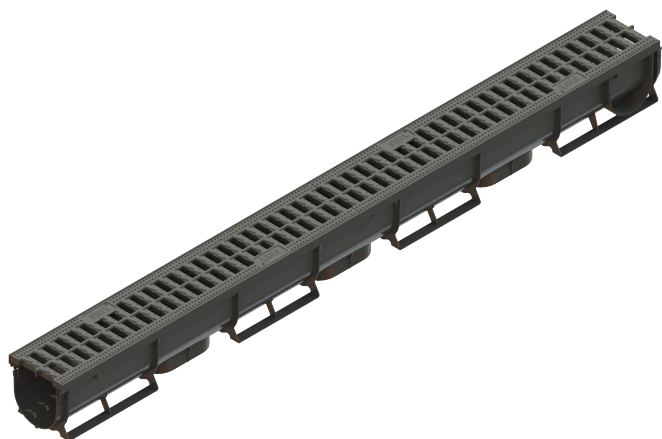


Conexiune tronson



Conexiune verticală

Accessories 088081-M



Conexiune verticala PP EASY 1 pt rigola LN70 Hext.90 (6827-1)



Etansant BASE, produse pentru constructii, tub 310 ml (G12M29-C)



Placa capat PP EASY 1 pt rigola LN70 Hext.90 (6822-M)

CHARACTERISTICS

Product name

Product code	088081-M
EAN code	6426282033309
Product category	Rigole plastic Easy 1
Brand	Drain
Weight	0.73 kg
Stock availability	Stockable
Length, mm	1000
Exterior width, mm	90
Nominal Length, mm	LN70
Exterior Height, mm (Hext)	90
Interior Height, mm (Hint)	70
Load class	A15
Channel material	Polypropylene
Grate Material	Polypropylene
Grate fastening system	Click
Warranty, months	24
Lifespan, years	20
Producer	VODALAND INDUSTRY LLC