

Drain: Kit rigola FB BASE LN100 Hext.125 gratar fonta clasica C250 iesire verticala 1000x140x125 (0400009203031)

0400009203031

1000 mm
LENGTH

130 mm
HEIGHT

140 mm
WIDTH



USAGE:

BASE class C250 gutters are intended for rainwater drainage, they are used in public traffic areas, parking lots and on road surfaces, near sidewalk curbs and in non-circulated areas, without shoulders.

QUALITY CONDITIONS:

- According to SR EN 1433:2002
- According to EU Regulation No. 305/2011
- Declaration of Performance

ADVANTAGES:


- Easy to handle and install
- UV-resistant
- Various installation widths and heights
- Use in public areas
- Long service life

LIFESPAN:

- 20 years - subject to compliance with assembly, storage and operation instructions

INSTALLATION

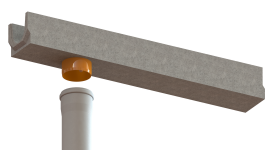
The Base gutter drainage system can be installed without a collector chamber because both ends of the gutter can be closed with end pieces, and the discharge point to the sewer network will be made through the vertical connection of the gutter.

 For efficient installation, we recommend using G12M29C sealant.

It is used for sealing gutters, pipes and drainage systems.

- Curing time: 24h/2-3 mm
- Operating temperature: -10° C to +40° C
- Storage conditions: Store in a ventilated area, at low temperatures.

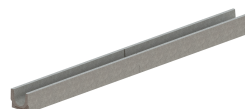
BASE sealant, construction products, 310 ml tube (G12M29-C).



Conexiune verticala



Conexiune tronson



Conexiune tronson



Conexiune camin colector

Accessories 0400009203031



Etansant BASE, produse pentru constructii, tub 310 ml (G12M29-C)



Placa capat PB BASE pt rigola FB LN100 Hext.125 140x106 (6701-B)

CHARACTERISTICS

Product name

Product code	0400009203031
--------------	---------------

EAN code	6427669010517
----------	---------------

Product category	Rigole beton BASE (A15-C250)
------------------	------------------------------

Brand	Drain
-------	-------

Weight	27.10 kg
--------	----------

Stock availability	On order
--------------------	----------

Length, mm	1000
------------	------

Exterior width, mm	140
--------------------	-----

Nominal Length, mm	LN100
--------------------	-------

Exterior Height, mm (Hext)	130
----------------------------	-----

Interior Height, mm (Hint)	125
----------------------------	-----

Load class	C250
------------	------

Channel material	Concrete
------------------	----------

Grate Material	Cast Iron
----------------	-----------

Grate fastening system	Fastener
------------------------	----------

Warranty, months	24
------------------	----

Lifespan, years	20
-----------------	----

Producer	BETONIKA
----------	----------