

Drain: Kit rigola PP BASE LN100 Hext.120 gratar CUPRU A15 1000x156x120 (0802020601)

0802020601

1000 mm
HOSSZ

120 mm
MAGASSÁG

156 mm
SZÉLESSÉG



FELHASZNÁLÁS:

The BASE range of gutters is designed for use in pedestrian areas and cycle paths with low traffic intensity. They are ideal for applications in private and residential buildings, easily integrating into modern and functional layouts.

MINŐSÉGI FELTÉTELEK:

- According to SR EN 1433:2003
- According to EU Regulation No. 305/2011
- Declaration of Performance

ELŐNYÖK:

- Easy to handle and install
- UV-resistant
- Various installation widths and heights
- Use in residential areas or private homes
- Long service life

ÉLETTARTAM:

- 20 years - subject to compliance with assembly, storage and operation instructions

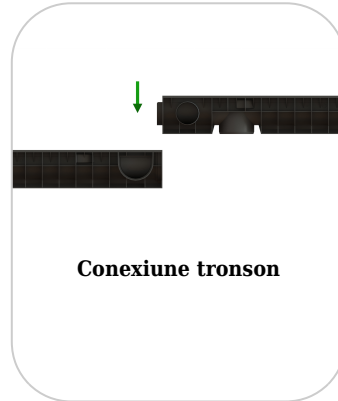
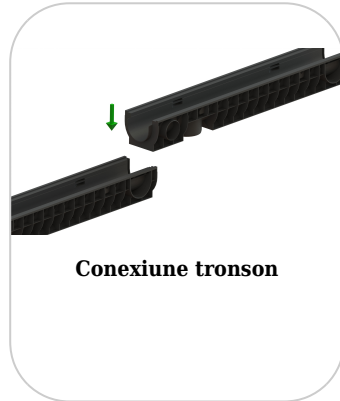
SZERELÉS

The gutter drainage system can be installed without a collector manhole because both ends of the gutter can be closed with end pieces, and the discharge point to the sewer network will be made through the vertical connection of the gutter.

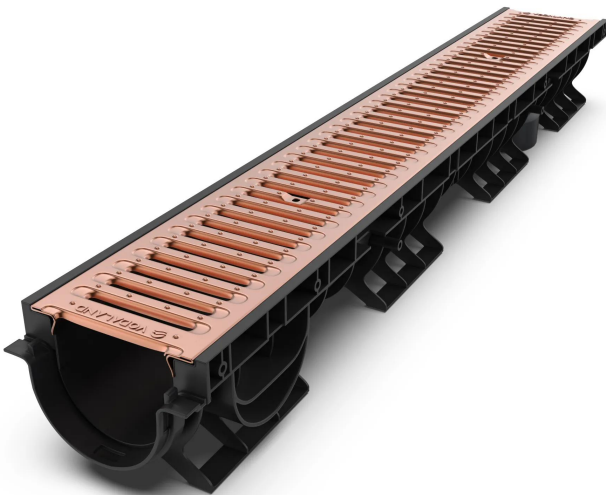
! For efficient installation, we recommend using G12M29-C sealant. It is used for sealing gutters, pipes and drainage systems.

- Curing time: 24h/2-3 mm
- Operating temperature: +5° C to +40° C
- Maximum storage temperature: 32° C

BASE sealant, construction products, 310 ml tube (G12M29-C).



Tartozékok 0802020601



JELLEMZŐK

Termék neve	Kit rigola PP BASE LN100 Hext.120 gratar CUPRU A15 1000x156x120 (0802020601)
Termékkód	0802020601
EAN kód	6427669009467
Termékkategória	Rigole plastic BASE (A15-C250)
Brand	Drain
Súly	2.80 kg
Készlet elérhetősége	Egyedi gyártású
Hossz, mm	1000
Külső szélesség, mm	156
Névleges szélesség, mm	LN100
Külső magasság, mm (Hext)	120
Belső magasság, mm (Hint)	86
Terhességi osztály	A15
Ereszcsatorna anyaga	Polipropilén
Grill Anyaga	Réz
Rácsrögzítő rendszer	Szj
Garancia, hónap	24
Élettartam, évek	20
Termelő	VODALAND INDUSTRY LLC