

Drain: Sifon PP EASY terasa/pardoseala 200x200 (SPP200200)

SPP200200

200 mm
LENGTH

55 mm
HEIGHT

200 mm
WIDTH



USAGE:

Polypropylene siphons are a useful, pragmatic and modern solution and are used to collect rainwater and direct it to underground sewer columns, only in pedestrian areas.

QUALITY CONDITIONS:

- According to SR EN 124

ADVANTAGES:


- Attractive design
- Heat resistance
- Use in residential areas or private homes
- Impact resistance
- Easy to inspect

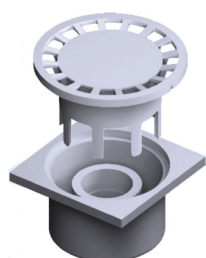
LIFESPAN:

- 20 years - subject to compliance with assembly, storage and operation instructions.

INSTALLATION

Regular maintenance is enough to eliminate the risk of unpleasant odors.

-  For efficient installation, we recommend using G12M29C sealant. It is used for sealing gutters, pipes and drainage systems.
- Curing time: 24h/2-3 mm
 - Operating temperature: -10° C to +40° C
 - Storage conditions: Store in a ventilated area, at low temperatures.
- BASE sealant, construction products, 310 ml tube (G12M29-C).



Schita montaj

CHARACTERISTICS

Product name**Product code**

SPP200200

EAN code

8002255801304

Product category

Sifoane plastic pentru terasă

Brand

Drain

Weight

0.00 kg

Stock availability

Stockable

Length, mm

200

Width, mm

200

Height (H), mm

55

Interior diameter / Clear opening (mm)

80

Exterior diameter (mm)

110/110

Load class

A15

Product Material

Polypropylene

Grate fastening system

Click

Producer

SIME GROUP TRADING S.R.L.