

# **Drain: Kit rigola FB PRO LN100 Hext.120 muchii OZ gratar FONTA D400 iesire verticala DN110 1000x160x120 (04007133409/120)**

## **04007133409/120**

**1000 mm**  
LENGTH

**120 mm**  
HEIGHT

**160 mm**  
WIDTH



### **USAGE:**

PRO series gutters of class D400 are intended for the drainage of surface rainwater from public traffic areas. They can be placed on shoulders, parking lots and parking spaces for all types of road vehicles.

### **QUALITY CONDITIONS:**

- According to SR EN 1433:2002
- According to EU Regulation No. 305/2011
- Declaration of Performance

### **ADVANTAGES:**

- Easy to handle and install
- UV-resistant
- Various installation widths and heights
- Use in public areas
- Long service life

### **LIFESPAN:**

- 50 years - subject to compliance with assembly, storage and operation instructions

## INSTALLATION

We recommend that the PRO gutter drainage system be installed next to a manhole, every 20 linear meters of gutter, or, if the installation of a manhole is not possible, gutters with vertical discharge can be used. The system is closed with end plates on both sides.



For efficient installation, we recommend using G12M29C sealant.

It is used for sealing gutters, pipes and drainage systems (interior or exterior), for bonding connections or joints.

- Curing time: 24h/2-3 mm

- Operating temperature: -10° C to +40° C

- Storage conditions: Store in a ventilated area at low temperatures.



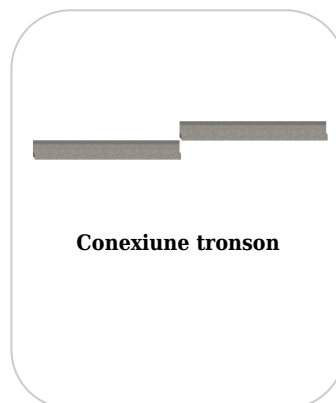
**Conexiune verticala**



**Conexiune verticala**

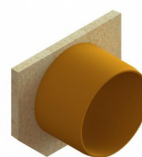


**Conexiune tronson**



**Conexiune tronson**

## Accessories 04007133409/120



Placa capat PB PRO cu stut pt  
rigola FB LN100 Hext.120  
(6701-09BD/120)



Placa capat PB PRO pt rigola FB  
LN100 Hext.120 (6701-BD/120)

## CHARACTERISTICS

## Product name

Product code	04007133409/120
--------------	-----------------

EAN code	6427669011637
----------	---------------

Product category	Rigole beton PRO (D400)
------------------	-------------------------

Brand	Drain
-------	-------

Weight	37.00 kg
--------	----------

Stock availability	On order
--------------------	----------

Length, mm	1000
------------	------

Width, mm	160
-----------	-----

Nominal Length, mm	LN100
--------------------	-------

Exterior Height, mm (Hext)	120
----------------------------	-----

Interior Height, mm (Hint)	87
----------------------------	----

Load class	D400
------------	------

Channel material	Concrete
------------------	----------

Grate Material	Cast Iron
----------------	-----------

Warranty, months	24
------------------	----

Lifespan, years	50
-----------------	----

Producer	BETONIKA
----------	----------