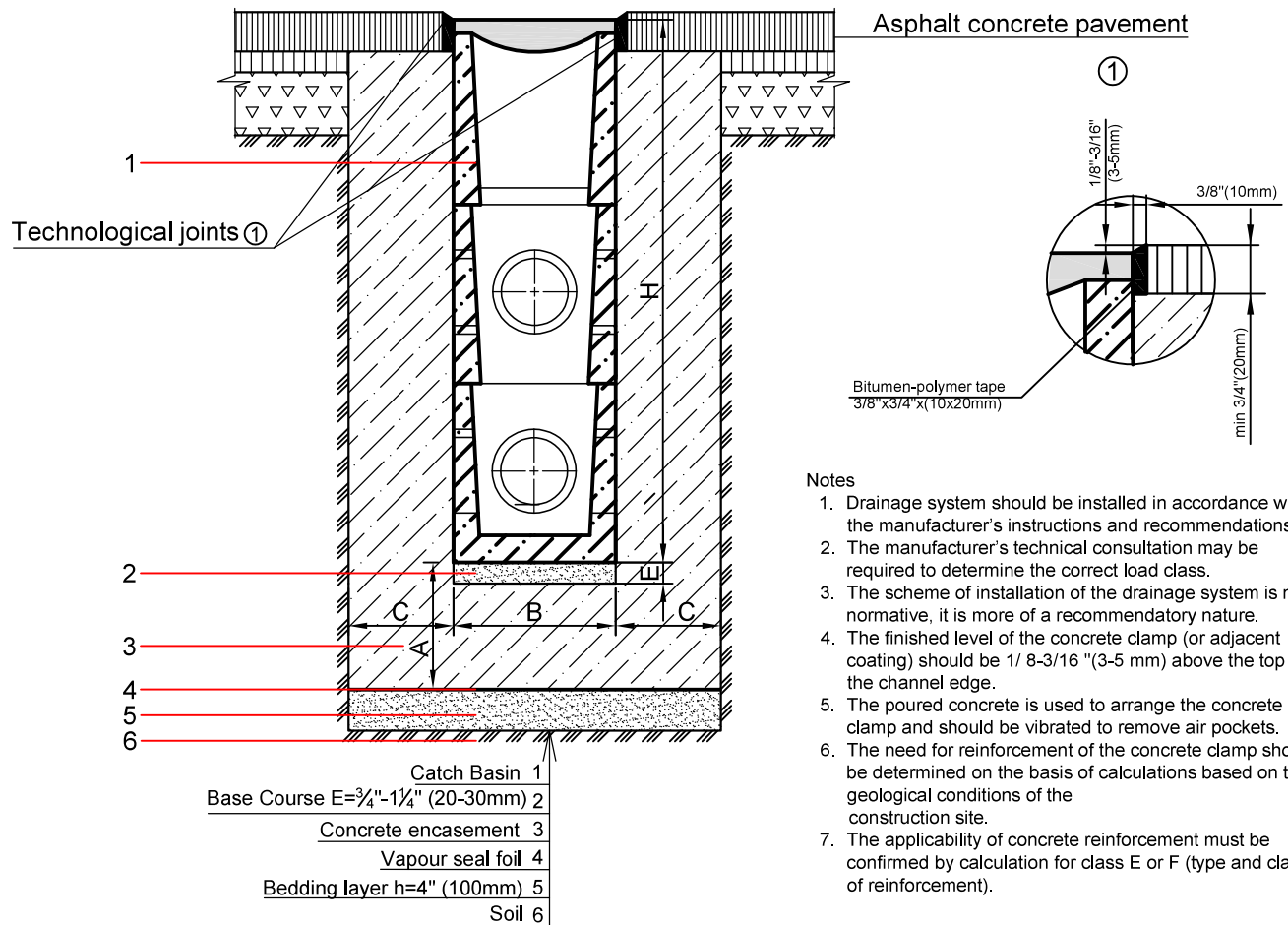


# Installation of Mega series concrete Catch Basins with a hydraulic cross-section 12"-20" (300-500mm) into an asphalt concrete pavement



## Recommended parameters of the Concrete encasement

| Parameter                         | Load class |            |
|-----------------------------------|------------|------------|
|                                   | Class D    | Class E    |
| Concrete encasement depth (A), in | 8"(200mm)  | 10"(250mm) |
| Concrete encasement width (C), in | 8"(200mm)  | 8"(200mm)  |
| Concrete grade                    | C30/35     |            |

### Notes

8. If the length of the drainage line exceeds 32.8 feet (10 m), it is necessary to provide transverse expansion joints in the construction of the concrete clamp.
9. To compensate for the temperature influence and deformation oscillations of the adjacent coating, it is recommended to arrange longitudinal temperature deformation seams; at a distance of 10-20" (250-500 mm) from the edge of the drainage channel.
10. Technological seam can be made with a special polyurethane sealant, as shown in scheme 1.
11. Drainage lines, which are under intense dynamic loads, including from transverse impact of transport, it is recommended to arrange from blocks monolithic drainage with lack of bolt fastening.
12. Follow the updates to the instructions and recommendations in the website Vodaland.

UNLESS OTHERWISE SPECIFIED:  
DIMENSIONS ARE IN MILLIMETERS  
SURFACE FINISH:  
TOLERANCES:  
LINEAR:  
ANGULAR:

FINISH:

DEBURR AND  
BREAK SHARP  
EDGES

DO NOT SCALE DRAWING

REVISION



TITLE:

12"-20" (300-500mm)  
Mega series Catch Basins  
Asphalt concrete pavement

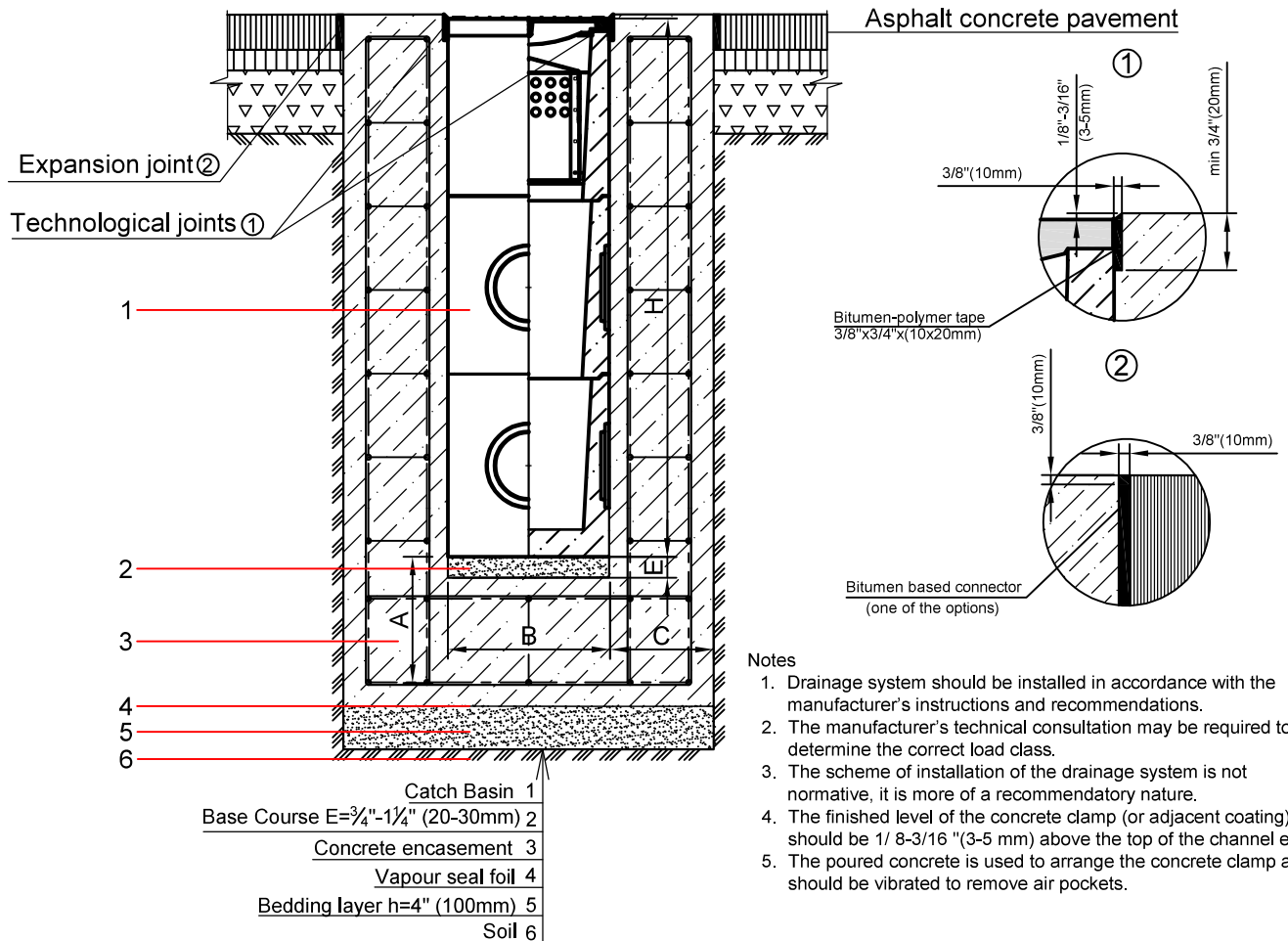
ARTICLE:

MATERIAL:

Concrete

| NAME   | SIGNATURE | DATE |
|--------|-----------|------|
| DRAWN  |           |      |
| CHK'D  |           |      |
| APP'VD |           |      |
| APP'VD |           |      |

## Installation of Mega series concrete Catch Basins with a hydraulic cross-section 12"-20" (300-500mm) into a concrete pavement




### Recommended parameters of the Concrete encasement

| Parameter                         | Load class |
|-----------------------------------|------------|
|                                   | Class F    |
| Concrete encasement depth (A), in | 10"(250mm) |
| Concrete encasement width (C), in | 10"(250mm) |
| Concrete grade                    | C30/35     |

## Notes

6. The need for reinforcement of the concrete clamp should be determined on the basis of calculations based on the geological conditions of the construction site.
7. The applicability of concrete reinforcement must be confirmed by calculation for class E or F (type and class of reinforcement).
8. If the length of the drainage line exceeds 32.8 feet (10 m), it is necessary to provide transverse expansion joints in the construction of the concrete clamp.
9. Compensation seam can be made using a special polyurethane sealant and extruded polystyrene, as shown in scheme 2 (as one of the options).
10. To compensate for the temperature influence and deformation oscillations of the adjacent coating, it is recommended to arrange longitudinal temperature deformation seams: at a distance of 10-20 "(250-500 mm) from the edge of the drainage channel.
11. Technological seam can be made with a special polyurethane sealant, as shown in scheme 1.
12. Drainage lines, which are under intense dynamic loads, including from transverse impact of transport, it is recommended to arrange from blocks monolithic drainage with lack of bolt fastening.
13. Follow the updates to the instructions and recommendations in the website Vodaland.

|   |      |           |      |           |  |                                    |  |   |  |          |  |
|---|------|-----------|------|-----------|--|------------------------------------|--|---|--|----------|--|
| UNLESS OTHERWISE SPECIFIED:<br>DIMENSIONS ARE IN MILLIMETERS<br>SURFACE FINISH:<br>TOLERANCES:<br>LINEAR:<br>ANGULAR: |      |           |      | FINISH:   |  | DEBURR AND<br>BREAK SHARP<br>EDGES |  | DO NOT SCALE DRAWING  |  | REVISION |  |
|   |      |           |      |           |  |                                    |  |  |  |          |  |
|   | NAME | SIGNATURE | DATE |           |  |                                    | TITLE:<br><br>12"-20" (300-500mm)<br><br>Mega series Catch Basins<br><br>Asphalt concrete pavement |   |  |          |  |
| DRAWN   |      |           |      |           |  |                                    |  |   |  |          |  |
| CHKD  |      |           |      |           |  |                                    |  |   |  |          |  |
| APPVD   |      |           |      |           |  |                                    |  |   |  |          |  |
| APPVD   |      |           |      |           |  |                                    |  |   |  |          |  |
|   |      |           |      | MATERIAL: |  |                                    | ARTICLE:   |   |  |          |  |
|   |      |           |      | Concrete  |  |                                    |  |   |  |          |  |
|   |      |           |      |           |  |                                    |  |   |  |          |  |
|   |      |           |      |           |  |                                    |  |   |  |          |  |