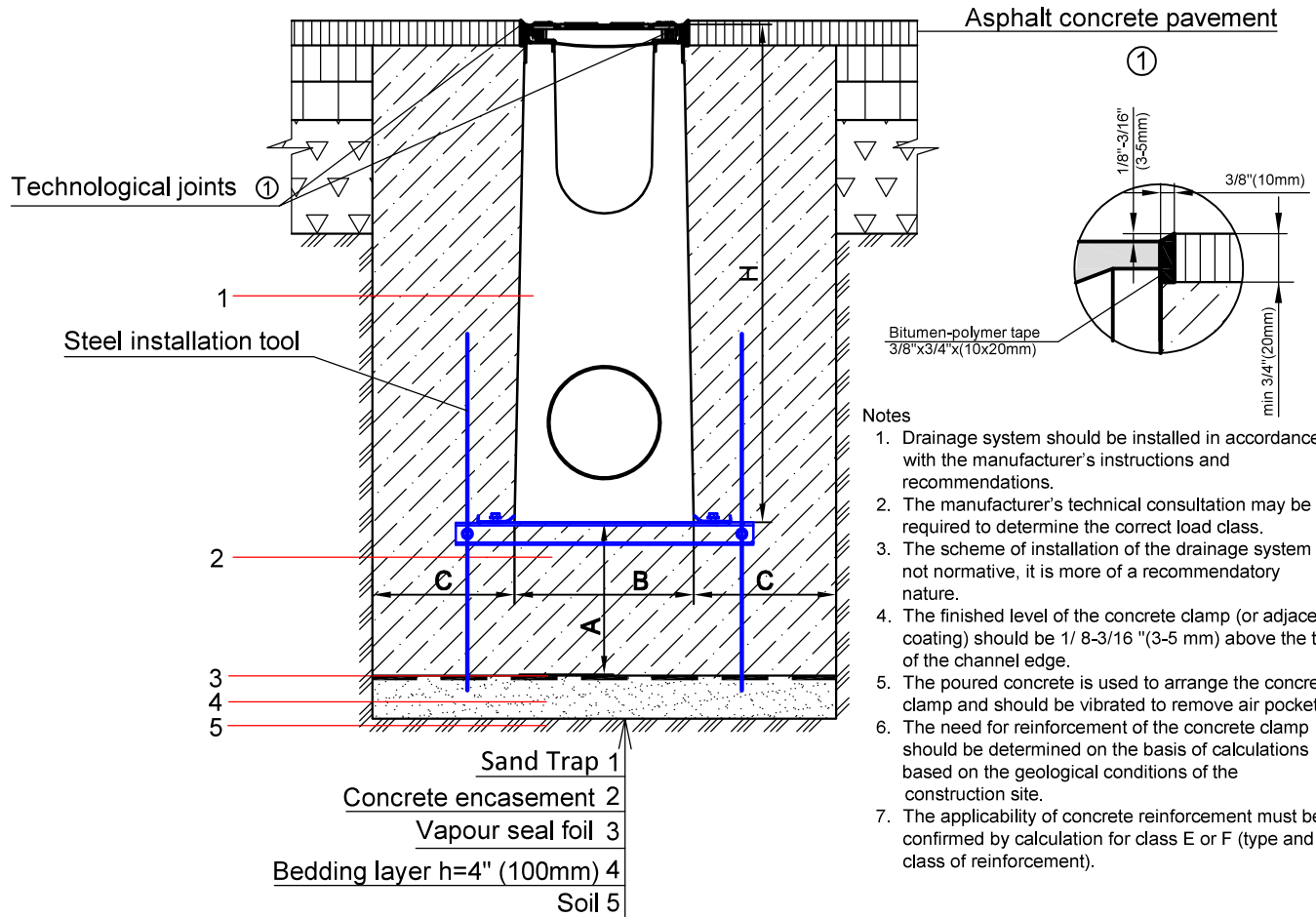


# Installation of Pro series concrete Sand Trap with a hydraulic cross-section 4"-12" (100-300mm) into an asphalt concrete pavement



- Notes**
1. Drainage system should be installed in accordance with the manufacturer's instructions and recommendations.
  2. The manufacturer's technical consultation may be required to determine the correct load class.
  3. The scheme of installation of the drainage system is not normative, it is more of a recommendatory nature.
  4. The finished level of the concrete clamp (or adjacent coating) should be 1/8-3/16" (3-5 mm) above the top of the channel edge.
  5. The poured concrete is used to arrange the concrete clamp and should be vibrated to remove air pockets.
  6. The need for reinforcement of the concrete clamp should be determined on the basis of calculations based on the geological conditions of the construction site.
  7. The applicability of concrete reinforcement must be confirmed by calculation for class E or F (type and class of reinforcement).

## Recommended parameters of the Concrete encasement

Parameter	Load class		
	Class C	Class D	Class E
Concrete encasement depth (A), in	6" (150mm)	8" (200mm)	10" (250mm)
Concrete encasement width (C), in	6" (150mm)	8" (200mm)	8" (200mm)
Concrete grade	C20/25	C30/35	

- Notes**
8. If the length of the drainage line exceeds 32.8 feet (10 m), it is necessary to provide transverse expansion joints in the construction of the concrete clamp.
  9. To compensate for the temperature influence and deformation oscillations of the adjacent coating, it is recommended to arrange longitudinal temperature deformation seams; at a distance of 10-20" (250-500 mm) from the edge of the drainage channel.
  10. Technological seam can be made with a special polyurethane sealant, as shown in scheme 1.
  11. Drainage lines, which are under intense dynamic loads, including from transverse impact of transport, it is recommended to arrange from blocks monolithic drainage with lack of bolt fastening.
  12. Follow the updates to the instructions and recommendations in the website Vodaland.

UNLESS OTHERWISE SPECIFIED: DIMENSIONS ARE IN MILLIMETERS SURFACE FINISH: TOLERANCES: LINEAR: ANGULAR:		FINISH:	DEBURR AND BREAK SHARP EDGES		DO NOT SCALE DRAWING	REVISION
					<b>TITLE:</b> 4"-12" (100-300mm) Pro series concrete Sand Trap Asphalt concrete pavement	
DRAWN	NAME	SIGNATURE	DATE	MATERIAL:		
CHK'D				Concrete		
APP'VD						
APP'VD						
					ARTICLE:	