
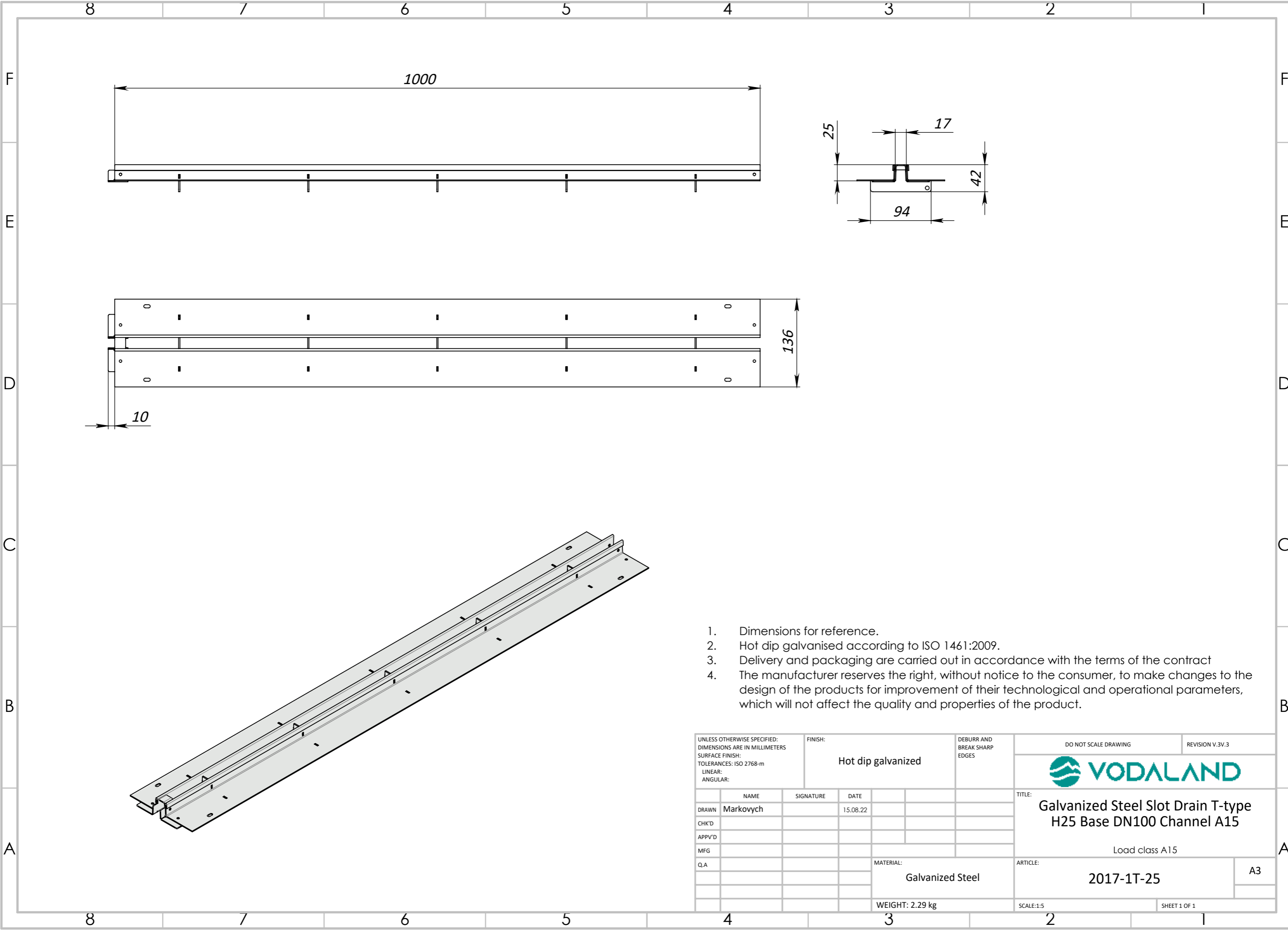


1. Deviation of the actual weight of the nominal can be up to 8%

UNLESS OTHERWISE SPECIFIED: DIMENSIONS ARE IN MILLIMETERS SURFACE FINISH: TOLERANCES: ISO 2768-c LINEAR: ANGULAR:			FINISH:		DEBURR AND BREAK SHARP EDGES		DO NOT SCALE DRAWING		REVISION			
							 <b>TITLE:</b> Plastic channel Base DN100 H150 Load class: C250					
DRAWN			LIL		DATE				07.07.22			
CHK'D			LMK									
APPV'D												
MFG												
Q.A							MATERIAL:		Plastic			
							WEIGHT: 1.95 kg		SCALE: 1:5			
							ARTICLE:		8000-M (80150)			
									A3			
									SHEET 1 OF 1			



1. Dimensions for reference.
2. Hot dip galvanised according to ISO 1461:2009.
3. Delivery and packaging are carried out in accordance with the terms of the contract
4. The manufacturer reserves the right, without notice to the consumer, to make changes to the design of the products for improvement of their technological and operational parameters, which will not affect the quality and properties of the product.

UNLESS OTHERWISE SPECIFIED: DIMENSIONS ARE IN MILLIMETERS SURFACE FINISH: TOLERANCES: ISO 2768-m LINEAR: ANGULAR:			FINISH: <b>Hot dip galvanised</b>		DEBURR AND BREAK SHARP EDGES		DO NOT SCALE DRAWING		REVISION V.3V.3		
							TITLE: <b>Galvanized Steel Slot Drain T-type H25 Base DN100 Channel A15</b>				
							Load class A15				
			MATERIAL: <b>Galvanized Steel</b>		ARTICLE: <b>2017-1T-25</b>			A3			
			WEIGHT: 2.29 kg		SCALE:1:5			SHEET 1 OF 1			

	NAME	SIGNATURE	DATE
DRAWN	Markovych		15.08.22
CHK'D			
APPV'D			
MFG			
Q.A			