
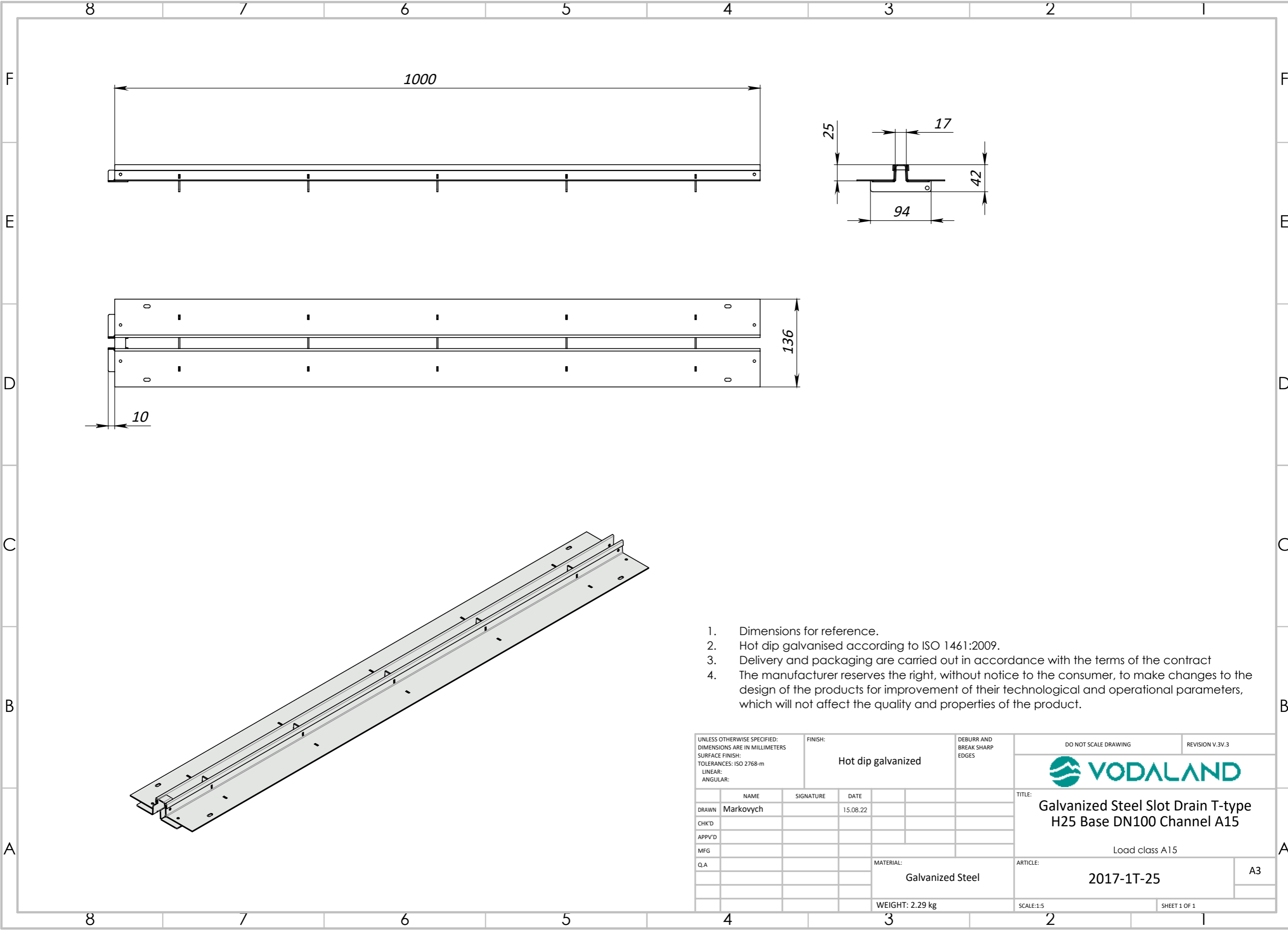


1. Deviation of the actual weight of the nominal can be up to 8%

UNLESS OTHERWISE SPECIFIED: DIMENSIONS ARE IN MILLIMETERS SURFACE FINISH: TOLERANCES: 2768-c LINEAR: ANGULAR:				FINISH:		DEBURR AND BREAK SHARP EDGES		DO NOT SCALE DRAWING		REVISION			
								 Plastic channel Base DN100 H60 Load class: C250 ARTICLE: 8050-M1 (80060)					
DRAWN		L/L		SIGNATURE		DATE						TITLE:	
CHK'D		LMK				04.07.22							
APPV'D													
MFG													
Q.A								MATERIAL:		ARTICLE:			
								Plastic		8050-M1 (80060)			
								WEIGHT: 1.09 kg		SCALE: 1:5			
										SHEET 1 OF 1			

A3



1. Dimensions for reference.
2. Hot dip galvanised according to ISO 1461:2009.
3. Delivery and packaging are carried out in accordance with the terms of the contract
4. The manufacturer reserves the right, without notice to the consumer, to make changes to the design of the products for improvement of their technological and operational parameters, which will not affect the quality and properties of the product.

UNLESS OTHERWISE SPECIFIED: DIMENSIONS ARE IN MILLIMETERS SURFACE FINISH: TOLERANCES: ISO 2768-m LINEAR: ANGULAR:			FINISH: Hot dip galvanised		DEBURR AND BREAK SHARP EDGES		DO NOT SCALE DRAWING		REVISION V.3V.3		
							TITLE: Galvanized Steel Slot Drain T-type H25 Base DN100 Channel A15				
							Load class A15				
			MATERIAL: Galvanized Steel		ARTICLE: 2017-1T-25			A3			
			WEIGHT: 2.29 kg		SCALE:1:5			SHEET 1 OF 1			

	NAME	SIGNATURE	DATE
DRAWN	Markovych		15.08.22
CHK'D			
APPV'D			
MFG			
Q.A			