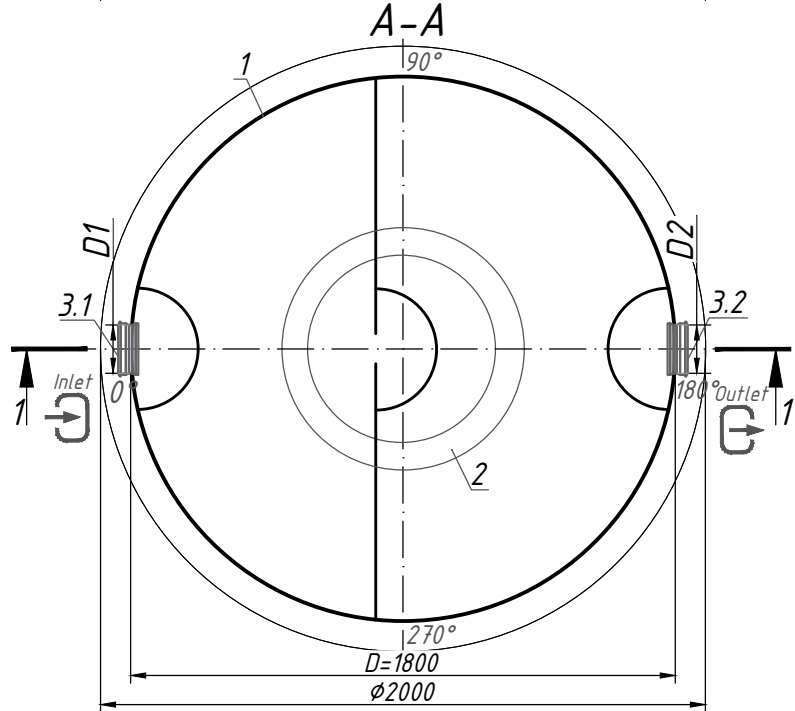
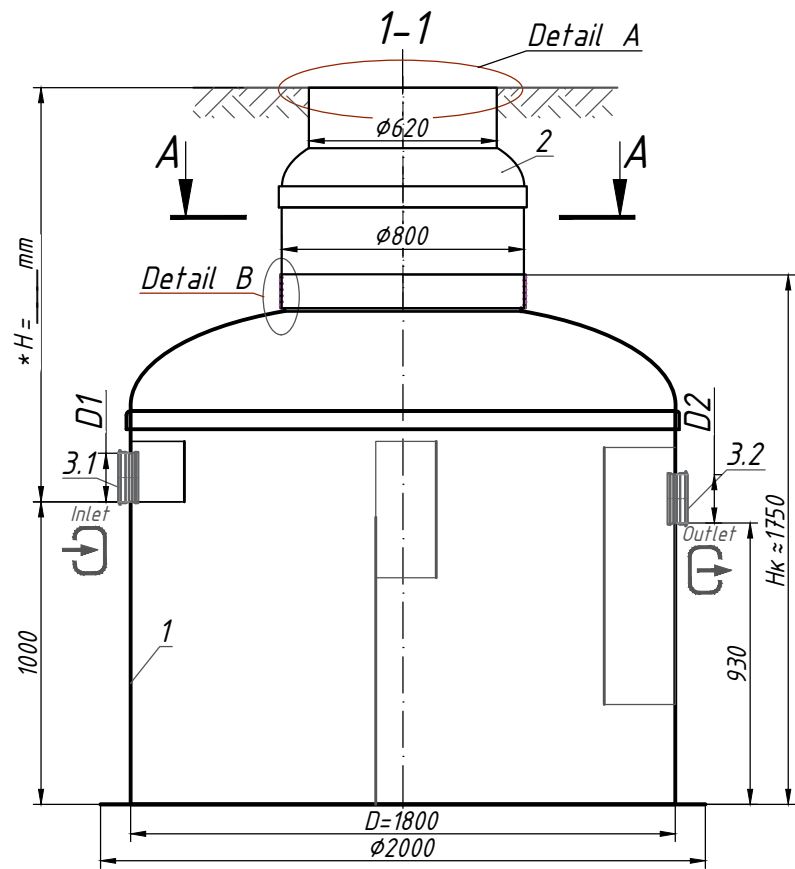
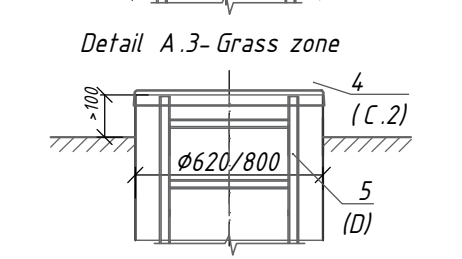
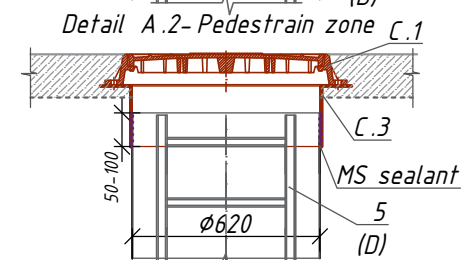
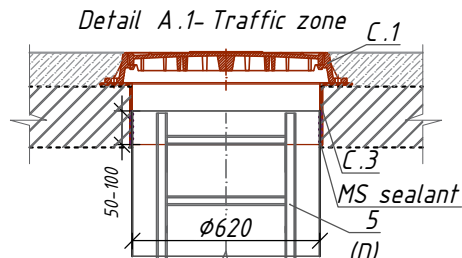


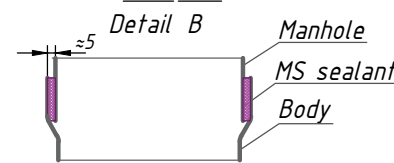
Grease Separator with a sludge double trap GPro-5 (S 1:25)



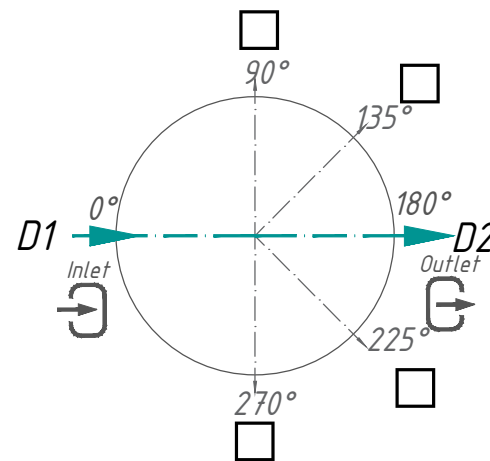
A - Manhole design *



B - Fixing the manhole with the body ***



C - Pipes location D1- inlet / D2- outlet on plan



Specification of materials and equipment Standard equipment ** (Tabl. 1)

Pos.	Identification	Name	Q-ty	Mass.pc .kg	Note
1	Vodaland	Grease Separator Vodaland GreasePro-5 with a sludge double trap, disch 5l/s, fiberglass D=1800 Hk=1750 mm	1	400	compl.
2		Inspection manhole ø 800 x 620	1		compl.
3.1	D1-Inlet pipe	Rubber seal for connection PVC SN4 ø 160	1		compl.
3.2	D2-Outlet pipe	Rubber seal for connection PVC SN4 ø 160	1		compl.
		Volume of light liquids	555		l
		Volume of sludge trap	1041		l

** The product is shipped in accordance with the Standard equipment (Tabl. 1), unless otherwise specified in the Additional equipment (Tabl. 2)

Additional equipment (Tabl. 2)

Pos.	Identification	Name	Note
A, B	D1-Inlet pipe / D2-Outlet pipe:		
	For connection D1, D2:	Funnel	<input type="checkbox"/>
		Smooth end	<input type="checkbox"/>
		Another:	<input type="checkbox"/>
	Diametr D pipes D1, D2:	ø90	<input type="checkbox"/>
		ø160	<input type="checkbox"/>
		Another:	<input type="checkbox"/>
		Manhole design (see A.1, A.2)	
C	C.1 Cover:	Garden plastic	<input type="checkbox"/>
		Load class A 15	<input type="checkbox"/>
		Load class C 250	<input checked="" type="checkbox"/>
C.2	Fiberglass cover ø620	Load class D400	<input type="checkbox"/>
		Another:	<input type="checkbox"/>
		C.3 Fiberglass adaptor plate	ø620, h=200mm
D	D. Universal ladder	Aluminium	<input type="checkbox"/>
		s/s	<input type="checkbox"/>
E	E. Level sensor	Oil	<input type="checkbox"/>
		Sludge	<input type="checkbox"/>
F	F. Fastening	Belt fastening for D 1800	<input type="checkbox"/>

Note:

*H-depth of the inlet connection, mm (in standard equipment H up to 2000 mm). H take a multiple of 50mm.
 When filling the manhole A.1 - the overall height of the product is less than 200mm; at the design of the manhole A.2 - the total height of the product is bigger than 100 mm.
 **The product is shipped in accordance with the Standard equipment (Tabl. 1), unless otherwise specified in the Additional equipment (Tabl. 2). The complete set of the product agrees with the manager.
 ***The manufacturer has the right to make constructive and pattern changes that do not worsen the characteristics of the product as a whole
 Permissible deviation during production of products is 1-3%.

Additional equipment: _____

Chan.	Q-ty	Sheet	Nºdoc.	Signature	Date	Phase	Sheet	Sheets

Grease Separator GPro-5 (GP-5)

