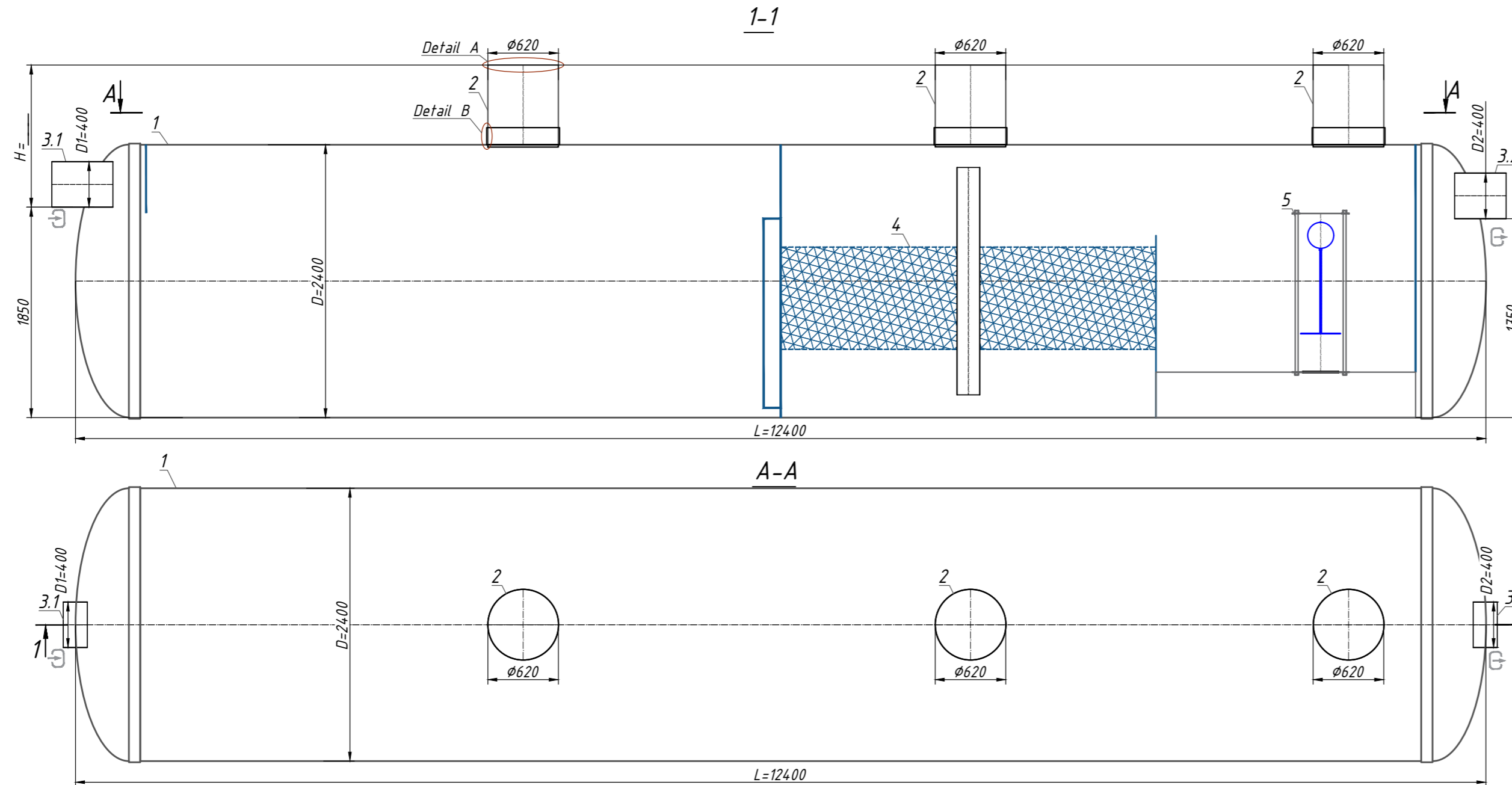


Oil Separator with sludge trap OilBaseH100-225 (S 1:40)

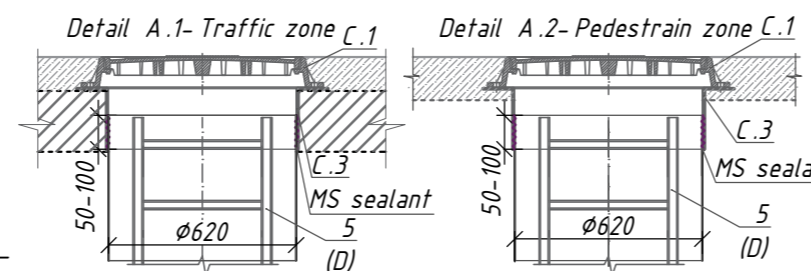


Note:

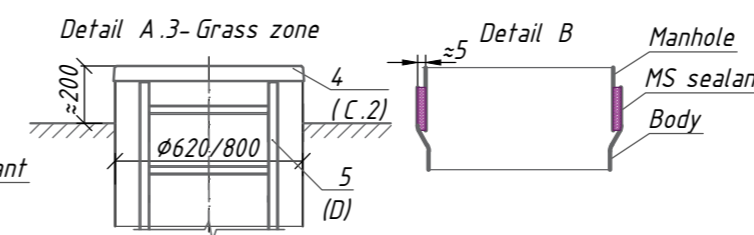
- *H-depth of the inlet connection, mm (in standard equipment H up to 2000 mm). H take a multiple of 50mm. When filling the manhole A.1-the overall height of the product is less than 200mm; A.2-the total height of the product is bigger than 100 mm.
- **The product is shipped according to Standard Equipment (Tabl. 1), unless otherwise specified in the Additional Equipment (Tabl. 2). The complete set of the product agrees with the manager.
- ***The product is shipped according to Standard Equipment (Tabl. 1), unless otherwise specified in the Additional (Tabl. 2) Permissible deviation during production of products is 1-3%.

Additional Information:

A -Manhole design *



B -Fixing the manhole with the body ***



Specification of materials and equipment. Standard equipment ** (Tabl. 1)

Pos.	Identification	Name	Q-tu	Mass ps.,kg	Note
1	Vodaland	Oil Separator with sludge trap Vodaland OilBaseH100-225, disch 225 l/s, fiberglass, D= 2400, L= 12400	1		compl.
2		Inspection manhole Ø800 / 620	0/3		compl.
3,1,3,2	D1-Inlet / D2-Outlet	For connection PVC SN4 Ø 400	2		compl.
4		Coalescent block	1		compl.
5		Automatic closure device	1		compl.
		Volume of light liquids		11250	l
		Volume of sludge trap		22500	l

** The product is shipped according to Standard Equipment (Tabl. 1), unless otherwise specified in the Additional Equipment (Tabl. 2)

Additional equipment (Tabl. 2)

Pos.	Identification	Name	Note
A, B	D1-Inlet / D2-Outlet :	<input type="checkbox"/> <input type="checkbox"/>	
	A.For connection D1, D2:	PVC <input type="checkbox"/> <input type="checkbox"/> PE100 <input type="checkbox"/> <input type="checkbox"/> Corsis <input type="checkbox"/> <input type="checkbox"/>	
	B.Diameter D1, D2:	D1 _____ / D2 _____ <input type="checkbox"/> <input type="checkbox"/> Another: _____ <input type="checkbox"/> <input type="checkbox"/>	
C	Manhole design (see A.1, A.2, A.3)		
	C.1 Cover:	Garden plastic <input type="checkbox"/> Type "L" class A15 <input type="checkbox"/> Type "T" class C250 <input type="checkbox"/> Type "TM" class D400 <input type="checkbox"/>	
	C.2 Fiberglass cove:	Ø620 <input type="checkbox"/>	
	C.3 Fiberglass adaptor plate:	Ø620, h=200 mm <input type="checkbox"/> Another: _____ <input type="checkbox"/>	
D	D. Universal ladder	Aluminium <input type="checkbox"/> s/s <input type="checkbox"/>	
E	E. Fastening	Belt fastening for <input type="checkbox"/>	
H	H. Level sensor	Sludge <input type="checkbox"/> Oil <input type="checkbox"/> Another: _____ <input type="checkbox"/>	

Rev.	Q-tu	Sh.	№doc.	Sign	Date	Stage	Sheet	Sheets
Oil Separator with sludge trap OilBaseH100-225 (OBH1-225)								