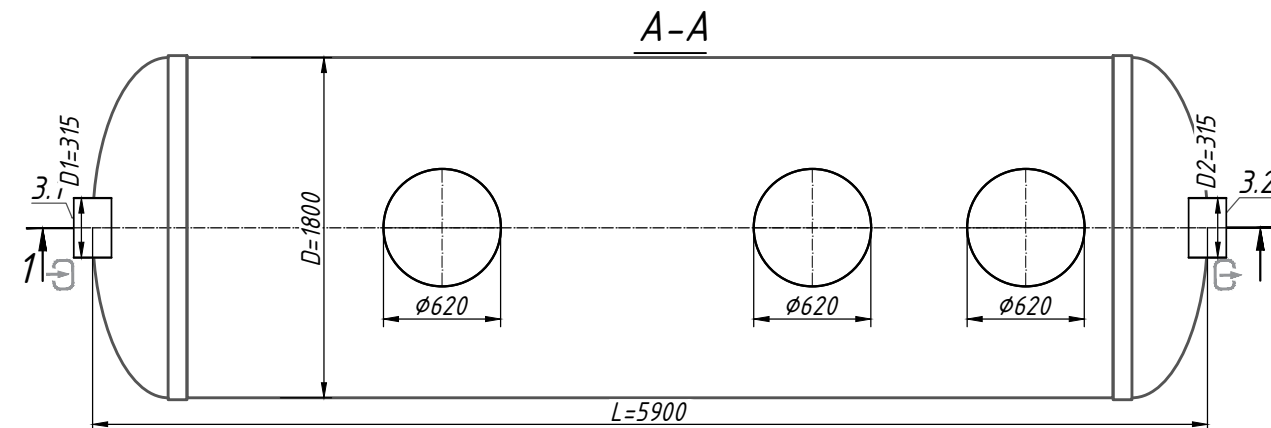
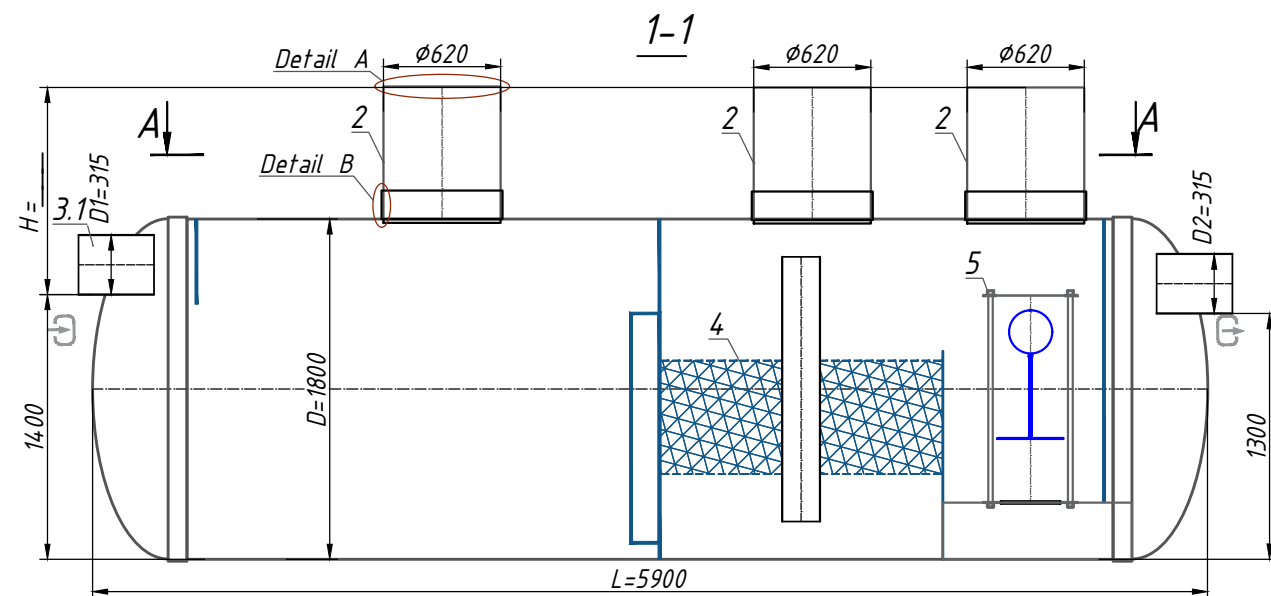
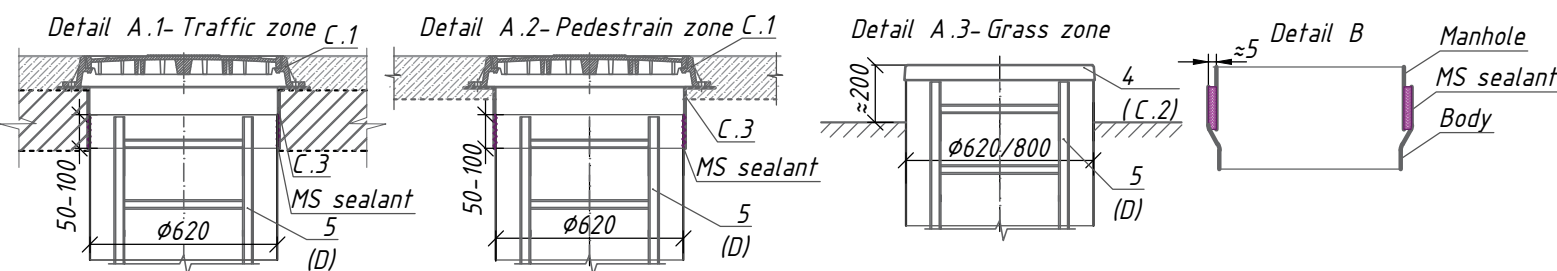


# Oil Separator with sludge trap OilBaseH100-60 (S 1:40)



A - Manhole design \*

B - Fixing the manhole with the body \*\*\*



**Note:**  
 \*H-depth of the inlet connection, mm (in standard equipment H up to 2000 mm). H take a multiple of 50mm.  
 When filling the manhole A.1-the overall height of the product is less than 200mm; A.2-the total height of the product is bigger than 100 mm.  
 \*\*The product is shipped according to Standard Equipment (Tabl. 1), unless otherwise specified in the Additional Equipment (Tabl. 2). The complete set of the product agrees with the manager.  
 \*\*\*The product is shipped according to Standard Equipment (Tabl. 1), unless otherwise specified in the Additional (Tabl. 2) Permissible deviation during production of products is 1-3%.

Additional Information:

## Specification of materials and equipment. Standard equipment \*\* (Tabl. 1)

Pos.	Identification	Name	Q-tu	Mass ps.,kg	Note
1	Vodaland	Oil Separator with sludge trap Vodaland OilBaseH100-60, disch 60 l/s, fiberglass, D=1800, L=5900	1		compl.
2		Inspection manhole 620 / 620	0/3		compl.
3,1,3,2	D1-Inlet / D2-Outlet	For connection PVC SN4 315	2		compl.
4		Coalescent block	1		compl.
5		Automatic closure device	1		compl.
		Volume of light liquids	3000		l
		Volume of sludge trap	6000		l

\*\*The product is shipped according to Standard Equipment (Tabl. 1), unless otherwise specified in the Additional Equipment (Tabl. 2)

## Additional equipment (Tabl. 2)

Pos.	Identification	Name	Note
A, B	D1-Inlet / D2-Outlet:		
	A.For connection D1, D2:	PVC <input type="checkbox"/>	<input type="checkbox"/>
		PE100 <input type="checkbox"/>	<input type="checkbox"/>
		Corsis <input type="checkbox"/>	<input type="checkbox"/>
	B.Diameter D1, D2:	D1 _____ / D2 _____ <input type="checkbox"/>	<input type="checkbox"/>
		Another: _____ <input type="checkbox"/>	<input type="checkbox"/>
C	Manhole design (see A.1, A.2, A.3)		
	C.1 Cover:	Garden plastic <input type="checkbox"/>	
		Type "L" class A15 <input type="checkbox"/>	
		Type "T" class C250 <input type="checkbox"/>	
		Type "TM" class D400 <input type="checkbox"/>	
	C.2 Fiberglass cove:	620 <input type="checkbox"/>	
	C.3 Fiberglass adaptor plate:	620, h=200 mm <input type="checkbox"/>	
		Another: _____ <input type="checkbox"/>	
D	D. Universal ladder	Aluminium <input type="checkbox"/>	
		s/s <input type="checkbox"/>	
E	E. Fastening	Belt fastening for <input type="checkbox"/>	
H	H. Level sensor	Sludge <input type="checkbox"/>	
		Oil <input type="checkbox"/>	
		Another: _____ <input type="checkbox"/>	

Rev.	Q-tu	Sh.	Nºdoc.	Sign	Date

Stage Sheet Sheets

Oil Separator with sludge trap  
 OilBaseH100-60  
 (OBH1-60)

