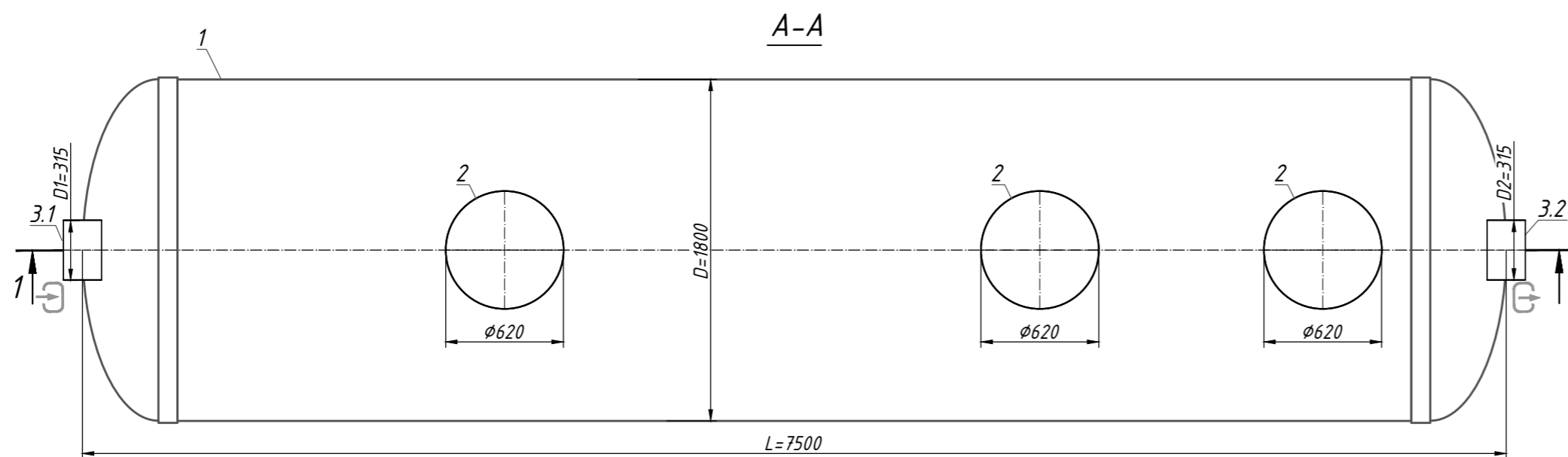
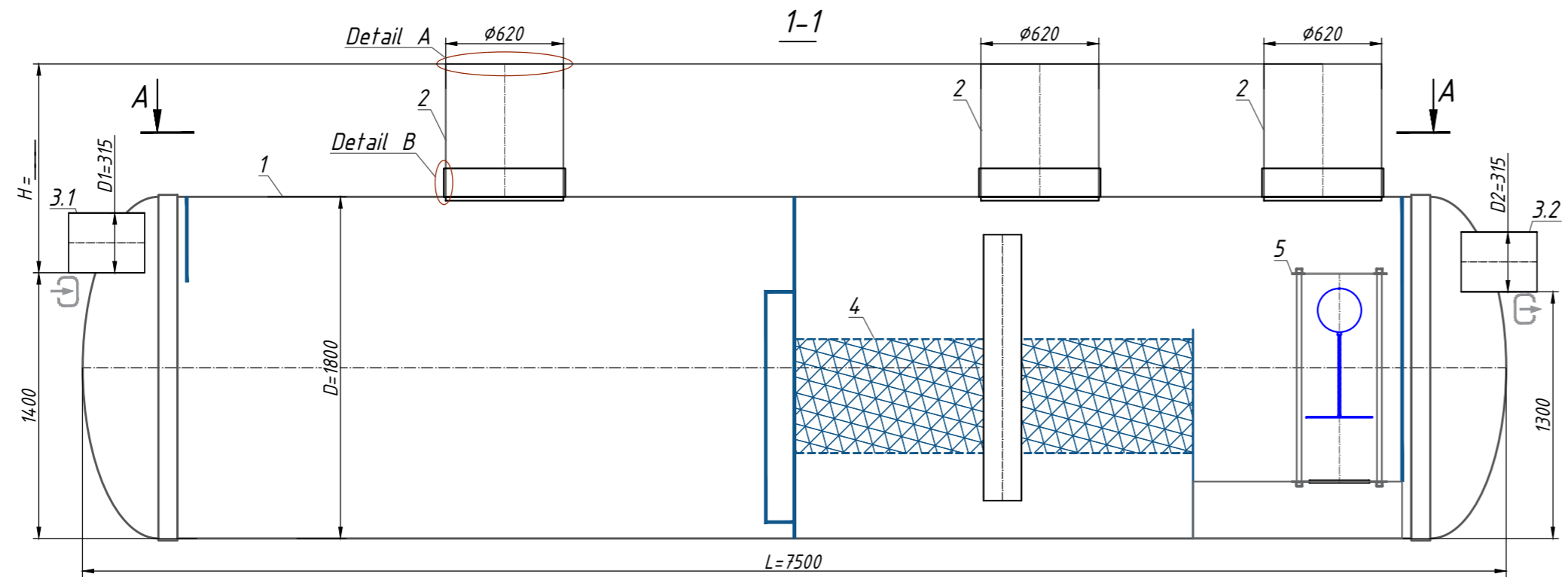


Oil Separator with sludge trap OilBaseH100 - 75 (S 1:30)

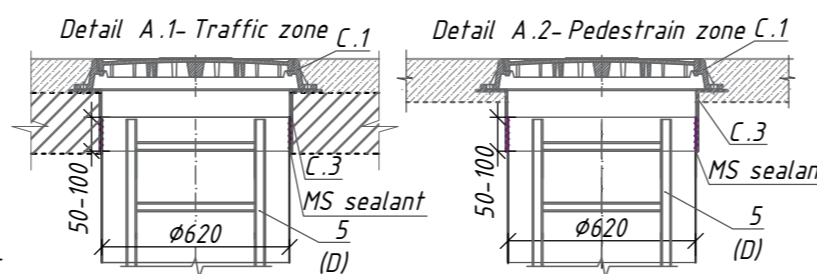


Note:

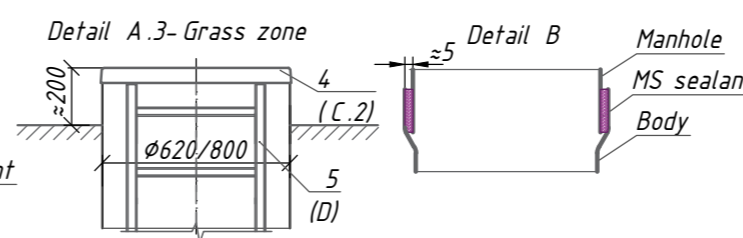
- *H-depth of the inlet connection, mm (in standard equipment H up to 2000 mm). H take a multiple of 50mm. When filling the manhole A.1-the overall height of the product is less than 200mm; A.2-the total height of the product is bigger than 100 mm.
- **The product is shipped according to Standard Equipment (Tabl. 1), unless otherwise specified in the Additional Equipment (Tabl. 2). The complete set of the product agrees with the manager.
- ***The product is shipped according to Standard Equipment (Tabl. 1), unless otherwise specified in the Additional (Tabl. 2). Permissible deviation during production of products is 1-3%.

Additional Information:

A - Manhole design *



B - Fixing the manhole with the body ***



Specification of materials and equipment. Standard equipment ** (Tabl. 1)

Pos.	Identification	Name	Q-tu	Mass ps.,kg	Note
1	Vodaland	Oil Separator with sludge trap Vodaland OilBaseH100 - 75, disch 75l/s, fiberglass, D= 1800, L= 7500	1		compl.
2		Inspection manhole 620 / 620	0/3		compl.
3,1,3,2		D1-Inlet / D2-Outlet	2		compl.
4		Coalescent block	1		compl.
5		Automatic closure device	1		compl.
		Volume of light liquids		3750	l
		Volume of sludge trap		7500	l

**The product is shipped according to Standard Equipment (Tabl. 1), unless otherwise specified in the Additional Equipment (Tabl. 2)

Additional equipment (Tabl. 2)

Pos.	Identification	Name	Note
A, B	A.For connection D1, D2: B.Diameter D1, D2:	D1-Inlet / D2-Outlet:	<input type="checkbox"/> <input type="checkbox"/>
		PVC	<input type="checkbox"/> <input type="checkbox"/>
		PE100	<input type="checkbox"/> <input type="checkbox"/>
		Corsis	<input type="checkbox"/> <input type="checkbox"/>
	D1 _____ / D2 _____	<input type="checkbox"/> <input type="checkbox"/>	
	Another: _____	<input type="checkbox"/> <input type="checkbox"/>	
C	C.1 Cover: C.2 Fiberglass cove: C.3 Fiberglass adaptor plate:	Manhole design (see A.1, A.2, A.3)	
		Garden plastic	<input type="checkbox"/>
		Type "L" class A15	<input type="checkbox"/>
		Type "T" class C250	<input type="checkbox"/>
		Type "TM" class D400	<input type="checkbox"/>
		620	<input type="checkbox"/>
		620, h=200 mm	<input type="checkbox"/>
Another: _____	<input type="checkbox"/>		
D	D. Universal ladder	Aluminium	<input type="checkbox"/>
		s/s	<input type="checkbox"/>
E	E. Fastening	Belt fastening for	<input type="checkbox"/>
H	H. Level sensor	Sludge	<input type="checkbox"/>
		Oil	<input type="checkbox"/>
		Another: _____	<input type="checkbox"/>

Rev.	Q-tu	Sh.	N#doc.	Sign	Date	Stage	Sheet	Sheets
Oil Separator with sludge trap OilBaseH100 - 75 (OBH1- 75)								